

APPENDIX D

Sewer Capacity Calculations

BY
CK. BY

CEC

Penfield & Smith
ENGINEERS • SURVEYORS • PLANNERS

101 EAST VICTORIA STREET, SANTA BARBARA, CA 93101
805-963-9532 • FAX 805-966-9801

Braemar Ranch

SH 2 OF 2
DATE 4/13/06
W.O. NO. 16743.01

- 11/28/05 thru 12/27/05 (29 days)

$$52.9 + 54.4 = 107.3 \text{ hrs}$$

222,000 gal/day

$$1000 \frac{\text{gal}}{\text{min}} \left(\frac{60 \text{ min}}{\text{hr}} \right) (107.3 \text{ hrs}) = 6,438,000 \text{ gal}$$

- 12/27/05 thru 1/23/06 (27 days)

$$38.9 + 41.2 = 80.1 \text{ hrs}$$

$$1000 \frac{\text{gal}}{\text{min}} \left(\frac{60 \text{ min}}{\text{hr}} \right) (80.1 \text{ hrs}) = 4,806,000 \text{ gal}$$

178,000 gal/day

* Maximum Flow of Pump Station

$$1000 \frac{\text{gal}}{\text{min}} \left(\frac{60 \text{ min}}{\text{hr}} \right) \left(\frac{24 \text{ hrs}}{\text{day}} \right) \times 2 \text{ pumps} = 2,880,000 \frac{\text{gal}}{\text{day}}$$

= 2.88 MGD



Santa Barbara

CITY OF SANTA BARBARA
VIA LUCERO LIFT STATION

Camarillo

Santa Maria

Date 7-21-09

W.O. No. 16743.02

Sheet 1 of

By BMD Ck. By

Lancaster

VIA LUCERO EXISTING PUMPS

FLOW RATE: 400 gpm (per City)

• 8/29/07 (1 day)

$$101.55 + 100.8 = 202.35 \text{ min}$$

$$400 \frac{\text{gal}}{\text{min}} (202.35 \text{ min}) = 80,940 \text{ gal/day}$$

• 3/15/03 (1 day)

$$400 \frac{\text{gal}}{\text{min}} (190.83 \text{ min}) = 76,332 \text{ gal/day}$$

⇒ AVE DAILY FLOW: 78,636 gal/day AVE

⇒ MAX. DAILY FLOW:

$$(400 \frac{\text{gal}}{\text{min}}) (\frac{60 \text{ min}}{\text{hr}}) (\frac{24 \text{ hr}}{\text{day}}) \times 2 \text{ pumps} = 1,152,000$$

⇒ 1,152,000 gpd MAX

BY CEC

Braemar Ranch Existing Pumps

1000 gpm (per pump station plans)

• 8/1/05 thru 8/29/05 (29 days)

$$51.3 + 52.4 = 103.7 \text{ hrs}$$

214,552 gal/day

$$1000 \frac{\text{gal}}{\text{min}} \left(\frac{60 \text{ min}}{\text{hr}} \right) (103.7 \text{ hrs}) = 6,222,000 \text{ gal}$$

• 8/29/05 thru 10/3/05 (35 days)

$$76.9 + 78 = 154.9 \text{ hrs}$$

265,543 gal/day

$$1000 \frac{\text{gal}}{\text{min}} \left(\frac{60 \text{ min}}{\text{hr}} \right) (154.9 \text{ hrs}) = 9,294,000 \text{ gal}$$

• 10/3/05 thru 10/31/05 (28 days)

$$38.7 + 40 = 78.7 \text{ hrs}$$

168,643 gal/day

$$1000 \frac{\text{gal}}{\text{min}} \left(\frac{60 \text{ min}}{\text{hr}} \right) (78.7 \text{ hrs}) = 4,722,000 \text{ gal}$$

• 10/31/05 thru 11/28/05 (28 days)

$$64.7 + 64.9 = 129.6 \text{ hrs}$$

277,714 gal/day

$$1000 \frac{\text{gal}}{\text{min}} \left(\frac{60 \text{ min}}{\text{hr}} \right) (129.6 \text{ hrs}) = 7,776,000 \text{ gal}$$



Santa Barbara

CITY OF SANTA BARBARA
LA COLINA LIFT STATION

Camarillo

Santa Maria

Date 7-21-09

W.O. No. 16743.02

Sheet 2 of

By BMD ck. By

Lancaster

LA COLINA EXISTING PUMPS

FLOW RATE: 400 gpm (PER CITY)

• 8/29/07 (1 day)

$$336.78 + 70.43 = 407.21 \text{ min}$$

$$400 \frac{\text{gal}}{\text{min}} (407.21 \text{ min}) = 162,884 \text{ gal/day}$$

• 3/15/03 (1 day)

$$224.68 + 278.33 = 503.01 \text{ min}$$

$$400 \frac{\text{gal}}{\text{min}} (503.01 \text{ min}) = 201,204 \text{ gal/day}$$

⇒ AVE DAILY FLOW : 182,044 gal/day AVE

⇒ MAX DAILY FLOW

$$400 \frac{\text{gal}}{\text{min}} \left(60 \frac{\text{min}}{\text{hr}} \right) \left(24 \frac{\text{hr}}{\text{day}} \right) \times 2 \text{ pumps} = 1,152,000$$

⇒ 1,152,000 gal/day MAX

inspection. Manholes installed prior to 1960 are constructed of brick and mortar. Manholes installed after 1960 are constructed of precast concrete rings. As with manholes, clean-outs are used for maintenance cleaning and inspection of the wastewater main. Clean-outs are generally sized the same as the main they are connected to and are placed at the end of the line in place of a full manhole.

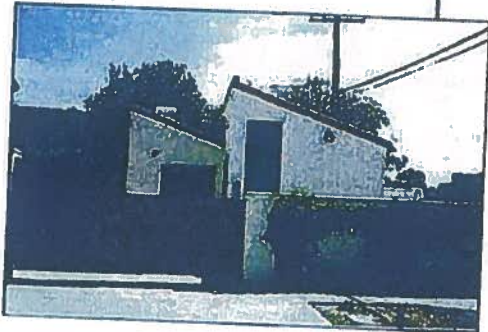
Wastewater Lift Stations

ANDANTE LIFT STATION

- Location: 980 Andante Road
- Date of construction: 1986
- Number of lots served: 8
- Type of station: Grinder Pumps
- Pump make: Hydromatic
- Pump size: 2"; Number of pumps: 2
- Flow rate: 43 GPM
- Motor: Aurora; 3 HP
- Wet Well: H 12' x DIA 4'; 1127 GAL
- Average inflow: 2.5 GPM; Date: 7/30/03; Time: 10:00 a.m.
- Detention time: 7.5 hrs
- Station control: Floats
- Emergency generator: NA
- Fuel consumption: NA
- Waterway potentially affected by failure: Mission Creek
- Force main: 2" P.V.C.; Length: 470'; Year: 1986

BRAEMER LIFT STATION

- Location: 1 Alan Road
- Date of construction: 1962
- Number of lots served: 870
- Type of station: Centrifugal Pumps
- Pump make: Smith and Loveless
- Pump size: 8"; Number of pumps: 2
- Flow rate: 1000 GPM
- Motor: Marathon Motors; 100 HP
- Wet well: L 15' x W 8' x H 17'; 15,259 GAL
- Average inflow: 368 GPM; Date: 7/31/03; Time: 9:00 a.m.
- Detention time: 42 min
- Station control: SCADA, Bubbler, Probe
- Emergency generator: Caterpillar; 350 kW
- Fuel consumption: 200 GAL tank; runs 7.5 hr
- Emergency pump bypass: yes
- Waterway potentially affected by failure: Arroyo Burro Creek
- Force main: 10" P.V.C.; Length: 3100'; Year: 1962
- Force main: 10' steel; Length: 3164'; Year: 1994



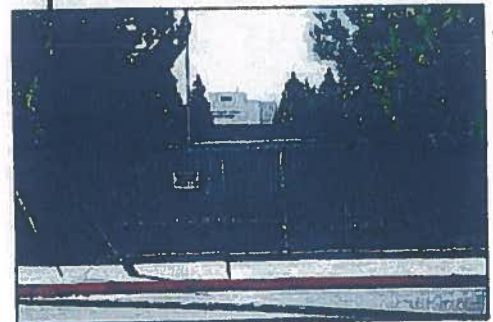
EL CAMINO DE LA LUZ LIFT STATION

- Location: 1901 El Camino de la Luz
- Date of construction: 1975
- Number of lots served: 24
- Type of station: Centrifugal Pumps
- Pump make: Fairbanks and Morse
- Pump size: 4"; Number of pumps: 2
- Flow rate: 150 GPM
- Motor: Marathon; 3 HP
- Wet well: H 15'9" x DIA 5'; 2348 GAL
- Average info: 98 GPM; Date: 7/31/03; Time: 8:00 a.m.
- Detention time: 2 hrs 25 min
- Station control: S.C.A.D.A., transducers, floats
- Emergency generator: Caterpillar 60 kw
- Fuel consumption: 105 gal; Run time: 19.5 hrs
- Emergency pump bypass: yes
- Waterway potentially affected by failure: Lighthouse Creek
- Force main: 4" D.I.P.; Length: 98'; Year: 1975

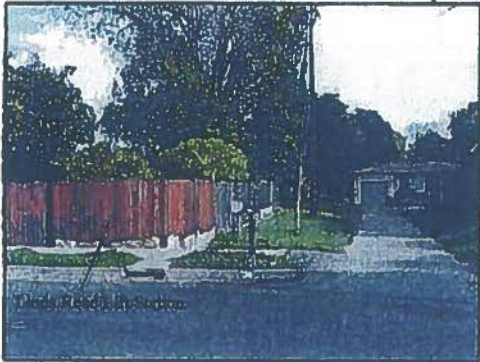


LA COLINA LIFT STATION

- Location: 4001 La Colina Road
- Date of construction: 1957
- Number of lots served: 140
- Type of station: Centrifugal Pumps
- Pump make: Smith and Loveless
- Pump size: 4"; Number of pumps: 2
- Flow rate: 400 GPM
- Motor: Smith and Loveless; 25 HP
- Wet Well: L 17'9" x W 7' x H 11'; 10,315 GAL
- Average info: 95 GPM; 7/31/03; 11:00 a.m.
- Detention time: 2 hrs
- Station control: S.C.A.D.A., transducers, floats
- Emergency Generator: Caterpillar; 80 kW; 100 GAL
- Fuel Consumption: 105 GAL tank; runs 19.5 hrs
- Emergency pump bypass: yes
- Waterway potentially affected by failure: Cieneguitas Creek
- Force main: 8" D.I.P.; Length: 3,175'; Year: 1957

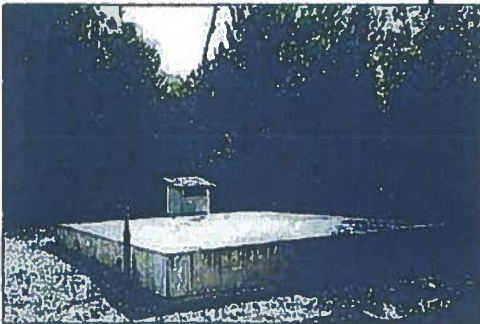


LINDA ROAD LIFT STATION



- Location: 312 Linda Road
- Date of construction: 2002
- Number of lots served: 141
- Type of station: Submersible
- Pump make: Vaughan
- Pump size: 4"; Number of pumps: 2
- Flow rate: 150 GPM
- Motor: Reliance; 5 HP
- Wet well: H 15' x DIA 6'; 3,382 GAL
- Average info: 2.8 GPM; Date: 7/31/03; 8:27 a.m.
- Detention time: 3 hrs
- Station control: S.C.A.D.A., transducers, floats
- Emergency generator: Caterpillar 60 kw
- Fuel consumption: 105 gal; Run time: 18.5 hrs
- Emergency pump bypass: yes
- Waterway potentially affected by failure: Arroyo Burro Creek
- Force main: 4" H.D.P.E.; Length: 555'; Year: 2002

MIRADERO LIFT STATION



- Location: 190 Miradero drive
- Date of construction: 1988
- Never placed in service due to gravity flow by-pass.

SAN MARCOS LIFT STATION #1

- Location: 308 Rosario Drive
- Date of construction: 1964
- Number of lots served: 57
- Type of station: Pneumatic Ejector
- Pump make: Yeoman
- Pump size: 4"; Number of pumps: 1
- Compressor make/model: By-Bon/HBp-113
- Flow rate: 75 GPM
- Motor: Balder; 3 HP
- Pot Size: H 2'4" x DIA 2'11"; 116 GAL
- Average Inflow: 6.96 GPM; 5/17/90; 9:00 a.m.
- Detention time: 4 hrs
- Station control: Electrical probes
- Emergency generator: NA
- Fuel consumption: NA
- Emergency pump bypass: yes
- Waterway potentially affected by failure: Badger Canyon Creek
- Force main: 6" D.I.P.; Length: 656'; Year: 1958



SAN MARCOS LIFT STATION #2

- Location: 308 Rosario Drive
- Date of construction: 1964
- Number of lots served: 57
- Type of station: Pneumatic Ejector
- Pump make: Yeoman
- Pump size: 4"; Number of pumps: 1
- Compressor make/model: Quincey/240
- Flow rate: 90 GPM
- Motor: Lima; 5 HP
- Pot Size: H 2'4" x DIA 2'6"; 85 GAL
- Average Inflow: 2.5 GPM; 7/30/03; 8:00 a.m.
- Detention time: 4 hrs
- Station control: Electrical probes
- Emergency generator: NA
- Fuel consumption: NA
- Emergency pump bypass: yes
- Waterway potentially affected by failure: Badger Canyon Creek
- Force main: 6" D.I.P.; Length: 656' Year: 1958

SKOFIELD LIFT STATION



- Location: 1891 Las Canoas Road
- Date of construction: 1967
- Number of lots served: 7
- Type of station: Centrifugal Pumps
- Pump make: Fairbanks and Morse
- Pump size: 4"; Number of pumps: 2
- Flow rate: 250 GPM
- Motor: U.S. Motor ; 30 HP
- Wet well: H 9;5" x DIA 5"; 1379 GAL
- Average info: 12 GPM; Date: 7/30/03; Time: 8:00 a.m.
- Detention time: 1.9 hrs
- Station control: S.C.A.D.A., transducers, floats
- Emergency generator: NA
- Fuel consumption: NA
- Emergency pump bypass: yes
- Waterway potentially affected by failure: Mission Creek

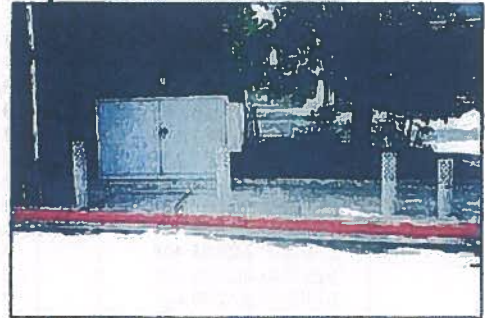
TALLANT LIFT STATION



- Location: 524 Tallant Road
- Date of construction: 1999 (originally constructed in 1968)
- Number of lots served: 6
- Type of station: Submersible
- Pump make: Flygt
- Pump size: 2"; Number of pumps: 2
- Flow rate: 100 GPM
- Motor: Flygt; 1.9 HP
- Wet well: H 8' x DIA 4'; 751 GAL
- Average info: 2.5 GPM; 17/31/03; 9:30 a.m.
- Detention time: 5 hrs
- Station control: S.C.A.D.A., transducers, floats
- Emergency generator: NA
- Fuel consumption: NA
- Emergency pump bypass: yes
- Waterway potentially affected by failure: Mission Creek
- Force main: 2" H.D.P.E.; Length: 190'; Year: 1999

VIA LUCERO LIFT STATION

- Location: 3959 Via Lucero
- Date of construction: 1982
- Number of lots served: 239
- Type of station: Centrifugal Pumps
- Pump make: Smith and Loveless
- Pump size: 4"; Number of pumps: 2
- Flow rate: 400 GPM
- Motor: General Electric; 15 HP
- Wet Well: H 13'6" x DIA 8'; 5073 GAL
- Average Inflow: 124 GPM; 7/31/03; 11:00 a.m.
- Detention time: 1 hr
- Station control: S.C.A.D.A., bubbler
- Emergency pump bypass: yes
- Waterway potentially affected by failure: San Roque Creek
- Force main: 6" C.I.P.; Length: 182'; Year: 1982



VISTA ELEVADA LIFT STATION

- Location: 2826 Vista Elevada
- Date of construction: 1986
- Number of lots served: 11
- Type of station: Grinder Pumps
- Pump make: Hydromatic
- Pump size: 2"; Number of pumps: 2
- Flow rate: 43 GPM
- Motor: Aurora; 3 HP
- Wet Well: H 12' x DIA 4'; 1127 GAL
- Average inflow: 2.5 GPM; Date: 7/30/03; Time: 9:30 a.m.
- Detention time: 7.5 hrs
- Station control: Floats
- Emergency generator: NA
- Fuel consumption: NA
- Waterway potentially affected by failure: Mission Creek
- Force main: 2" P.V.C. Length: 296'; Year: 1986



Camino De La Luz			
Pump 1		Pump 2	
3/15/2003 12:02:04 AM	1	3/15/2003 12:08:04 AM	1
3/15/2003 12:03:19 AM	0	3/15/2003 12:09:49 AM	0
3/15/2003 12:14:19 AM	1	3/15/2003 12:20:50 AM	1
3/15/2003 12:15:34 AM	0	3/15/2003 12:22:05 AM	0
3/15/2003 12:26:19 AM	1	3/15/2003 12:32:19 AM	1
3/15/2003 12:27:34 AM	0	3/15/2003 12:33:19 AM	0
3/15/2003 12:38:04 AM	1	3/15/2003 12:44:20 AM	1
3/15/2003 12:39:19 AM	0	3/15/2003 12:45:34 AM	0
3/15/2003 12:50:19 AM	1	3/15/2003 12:57:19 AM	1
3/15/2003 12:51:19 AM	0	3/15/2003 12:58:34 AM	0
3/15/2003 1:05:20 AM	1	3/15/2003 1:12:35 AM	1
3/15/2003 1:06:20 AM	0	3/15/2003 1:13:50 AM	0
3/15/2003 1:20:35 AM	1	3/15/2003 1:28:20 AM	1
3/15/2003 1:22:20 AM	0	3/15/2003 1:29:35 AM	0
3/15/2003 1:35:20 AM	1	3/15/2003 1:43:50 AM	1
3/15/2003 1:36:20 AM	0	3/15/2003 1:45:35 AM	0
3/15/2003 1:51:50 AM	1	3/15/2003 1:58:05 AM	1
3/15/2003 1:53:05 AM	0	3/15/2003 1:59:20 AM	0
3/15/2003 2:04:05 AM	1	3/15/2003 2:10:05 AM	1
3/15/2003 2:05:20 AM	0	3/15/2003 2:11:50 AM	0
3/15/2003 2:15:50 AM	1	3/15/2003 2:22:05 AM	1
3/15/2003 2:16:50 AM	0	3/15/2003 2:23:50 AM	0
3/15/2003 2:29:05 AM	1	3/15/2003 2:35:50 AM	1
3/15/2003 2:29:36 AM	0	3/15/2003 2:37:05 AM	0
3/15/2003 2:42:50 AM	1	3/15/2003 2:49:36 AM	1
3/15/2003 2:44:06 AM	0	3/15/2003 2:50:36 AM	0
3/15/2003 2:56:06 AM	1	3/15/2003 3:00:36 AM	1
3/15/2003 2:56:36 AM	0	3/15/2003 3:01:51 AM	0
3/15/2003 3:06:06 AM	1	3/15/2003 3:10:21 AM	1
3/15/2003 3:07:21 AM	0	3/15/2003 3:12:06 AM	0
3/15/2003 3:14:36 AM	1	3/15/2003 3:18:36 AM	1
3/15/2003 3:16:21 AM	0	3/15/2003 3:20:21 AM	0
3/15/2003 3:22:51 AM	1	3/15/2003 3:27:06 AM	1
3/15/2003 3:24:06 AM	0	3/15/2003 3:28:51 AM	0
3/15/2003 3:31:21 AM	1	3/15/2003 3:34:51 AM	1
3/15/2003 3:33:06 AM	0	3/15/2003 3:37:21 AM	0
3/15/2003 3:39:36 AM	1	3/15/2003 3:43:21 AM	1
3/15/2003 3:40:51 AM	0	3/15/2003 3:45:51 AM	0
3/15/2003 3:48:22 AM	1	3/15/2003 3:51:51 AM	1
3/15/2003 3:49:36 AM	0	3/15/2003 3:53:51 AM	0
3/15/2003 3:56:06 AM	1	3/15/2003 3:59:51 AM	1
3/15/2003 3:58:06 AM	0	3/15/2003 4:02:21 AM	0
3/15/2003 4:04:37 AM	1	3/15/2003 4:08:21 AM	1
3/15/2003 4:06:36 AM	0	3/15/2003 4:11:21 AM	0
3/15/2003 4:13:06 AM	1	3/15/2003 4:17:06 AM	1
3/15/2003 4:15:21 AM	0	3/15/2003 4:20:51 AM	0
3/15/2003 4:22:36 AM	1	3/15/2003 4:26:06 AM	1
3/15/2003 4:24:21 AM	0	3/15/2003 4:29:07 AM	0
3/15/2003 4:31:06 AM	1	3/15/2003 4:35:22 AM	1
3/15/2003 4:32:51 AM	0	3/15/2003 4:37:21 AM	0
3/15/2003 4:39:52 AM	1	3/15/2003 4:43:51 AM	1
3/15/2003 4:40:51 AM	0	3/15/2003 4:45:37 AM	0
3/15/2003 4:48:07 AM	1	3/15/2003 4:52:52 AM	1
3/15/2003 4:49:52 AM	0	3/15/2003 4:54:37 AM	0
3/15/2003 4:57:36 AM	1	3/15/2003 5:01:52 AM	1
3/15/2003 4:58:52 AM	0	3/15/2003 5:03:07 AM	0
3/15/2003 5:06:07 AM	1	3/15/2003 5:10:52 AM	1
3/15/2003 5:07:52 AM	0	3/15/2003 5:12:37 AM	0
3/15/2003 5:15:22 AM	1	3/15/2003 5:20:07 AM	1
3/15/2003 5:17:52 AM	0	3/15/2003 5:21:52 AM	0
3/15/2003 5:24:52 AM	1	3/15/2003 5:28:52 AM	1
3/15/2003 5:26:22 AM	0	3/15/2003 5:31:22 AM	0
3/15/2003 5:33:37 AM	1	3/15/2003 5:37:52 AM	1
3/15/2003 5:35:22 AM	0	3/15/2003 5:39:37 AM	0
3/15/2003 5:42:07 AM	1	3/15/2003 5:46:08 AM	1
3/15/2003 5:43:52 AM	0	3/15/2003 5:48:38 AM	0
3/15/2003 5:50:22 AM	1	3/15/2003 5:54:23 AM	1

3/15/2003 5:52:38 AM	0	3/15/2003 5:57:22 AM	0
3/15/2003 5:59:08 AM	1	3/15/2003 6:02:38 AM	1
3/15/2003 6:01:22 AM	0	3/15/2003 6:05:38 AM	0
3/15/2003 6:07:23 AM	1	3/15/2003 6:10:53 AM	1
3/15/2003 6:09:23 AM	0	3/15/2003 6:13:53 AM	0
3/15/2003 6:16:23 AM	1	3/15/2003 6:19:53 AM	1
3/15/2003 6:18:08 AM	0	3/15/2003 6:22:23 AM	0
3/15/2003 6:24:08 AM	1	3/15/2003 6:28:38 AM	1
3/15/2003 6:26:08 AM	0	3/15/2003 6:30:38 AM	0
3/15/2003 6:32:53 AM	1	3/15/2003 6:36:38 AM	1
3/15/2003 6:34:53 AM	0	3/15/2003 6:39:38 AM	0
3/15/2003 6:41:23 AM	1	3/15/2003 6:45:23 AM	1
3/15/2003 6:43:38 AM	0	3/15/2003 6:48:53 AM	0
3/15/2003 6:50:38 AM	1	3/15/2003 6:55:08 AM	1
3/15/2003 6:54:08 AM	0	3/15/2003 7:38:08 AM	0
3/15/2003 7:39:24 AM	1	3/15/2003 7:45:09 AM	1
3/15/2003 7:43:54 AM	0	3/15/2003 7:52:39 AM	0
3/15/2003 7:53:54 AM	1	3/15/2003 8:02:24 AM	1
3/15/2003 8:01:24 AM	0	3/15/2003 8:34:24 AM	0
3/15/2003 8:29:09 AM	1	3/15/2003 8:39:09 AM	1
3/15/2003 8:34:24 AM	0	3/15/2003 10:54:25 AM	0
3/15/2003 8:34:54 AM	1	3/15/2003 10:55:40 AM	1
3/15/2003 8:43:54 AM	0	3/15/2003 11:13:55 AM	0
3/15/2003 10:41:25 AM	1	3/15/2003 11:14:25 AM	1
3/15/2003 10:53:10 AM	0	3/15/2003 11:24:25 AM	0
3/15/2003 10:54:25 AM	1	3/15/2003 11:25:40 AM	1
3/15/2003 10:55:40 AM	0	3/15/2003 12:10:56 PM	0
3/15/2003 11:12:40 AM	1	3/15/2003 12:12:26 PM	1
3/15/2003 11:13:55 AM	0	3/15/2003 12:16:11 PM	0
3/15/2003 11:15:10 AM	1	3/15/2003 12:25:41 PM	1
3/15/2003 11:16:55 AM	0	3/15/2003 12:29:26 PM	0
3/15/2003 11:18:10 AM	1	3/15/2003 12:56:41 PM	1
3/15/2003 11:25:40 AM	0	3/15/2003 12:59:56 PM	0
3/15/2003 11:26:55 AM	1	3/15/2003 1:09:41 PM	1
3/15/2003 12:10:56 PM	0	3/15/2003 1:11:41 PM	0
3/15/2003 12:17:26 PM	1	3/15/2003 1:18:26 PM	1
3/15/2003 12:24:26 PM	0	3/15/2003 1:21:56 PM	0
3/15/2003 12:30:26 PM	1	3/15/2003 1:30:12 PM	1
3/15/2003 12:55:26 PM	0	3/15/2003 1:31:57 PM	0
3/15/2003 1:01:11 PM	1	3/15/2003 1:34:42 PM	1
3/15/2003 1:07:57 PM	0	3/15/2003 1:36:42 PM	0
3/15/2003 1:13:26 PM	1	3/15/2003 1:44:15 PM	1
3/15/2003 1:17:11 PM	0	3/15/2003 1:46:14 PM	0
3/15/2003 1:23:27 PM	1	3/15/2003 1:52:57 PM	1
3/15/2003 1:28:12 PM	0	3/15/2003 1:54:57 PM	0
3/15/2003 1:31:57 PM	1	3/15/2003 2:02:09 PM	1
3/15/2003 1:33:12 PM	0	3/15/2003 2:03:58 PM	0
3/15/2003 1:38:35 PM	1	3/15/2003 2:11:21 PM	1
3/15/2003 1:42:20 PM	0	3/15/2003 2:13:09 PM	0
3/15/2003 1:47:59 PM	1	3/15/2003 2:20:58 PM	1
3/15/2003 1:51:09 PM	0	3/15/2003 2:22:46 PM	0
3/15/2003 1:56:45 PM	1	3/15/2003 2:31:58 PM	1
3/15/2003 2:00:57 PM	0	3/15/2003 2:34:22 PM	0
3/15/2003 2:05:57 PM	1	3/15/2003 2:41:46 PM	1
3/15/2003 2:09:21 PM	0	3/15/2003 2:44:22 PM	0
3/15/2003 2:14:57 PM	1	3/15/2003 2:51:59 PM	1
3/15/2003 2:19:10 PM	0	3/15/2003 2:54:22 PM	0
3/15/2003 2:24:33 PM	1	3/15/2003 3:03:23 PM	1
3/15/2003 2:30:10 PM	0	3/15/2003 3:05:59 PM	0
3/15/2003 2:36:10 PM	1	3/15/2003 3:13:59 PM	1
3/15/2003 2:40:22 PM	0	3/15/2003 3:15:59 PM	0
3/15/2003 2:46:10 PM	1	3/15/2003 3:24:00 PM	1
3/15/2003 2:49:59 PM	0	3/15/2003 3:26:00 PM	0
3/15/2003 2:56:11 PM	1	3/15/2003 3:33:47 PM	1
3/15/2003 3:01:35 PM	0	3/15/2003 3:36:12 PM	0
3/15/2003 3:07:47 PM	1	3/15/2003 3:43:48 PM	1
3/15/2003 3:11:35 PM	0	3/15/2003 3:46:24 PM	0
3/15/2003 3:17:47 PM	1	3/15/2003 3:55:00 PM	1
3/15/2003 3:22:11 PM	0	3/15/2003 3:56:49 PM	0
3/15/2003 3:27:48 PM	1	3/15/2003 4:05:25 PM	1

3/15/2003 3:32:00 PM	0	3/15/2003 4:07:01 PM	0
3/15/2003 3:38:00 PM	1	3/15/2003 4:15:13 PM	1
3/15/2003 3:42:12 PM	0	3/15/2003 4:17:01 PM	0
3/15/2003 3:48:12 PM	1	3/15/2003 4:25:13 PM	1
3/15/2003 3:53:13 PM	0	3/15/2003 4:27:01 PM	0
3/15/2003 3:58:48 PM	1	3/15/2003 4:35:01 PM	1
3/15/2003 4:02:49 PM	0	3/15/2003 4:36:50 PM	0
3/15/2003 4:09:37 PM	1	3/15/2003 4:44:38 PM	1
3/15/2003 4:12:37 PM	0	3/15/2003 4:46:50 PM	0
3/15/2003 4:19:37 PM	1	3/15/2003 4:54:02 PM	1
3/15/2003 4:22:37 PM	0	3/15/2003 4:56:02 PM	0
3/15/2003 4:28:50 PM	1	3/15/2003 5:04:27 PM	1
3/15/2003 4:32:26 PM	0	3/15/2003 5:06:15 PM	0
3/15/2003 4:39:26 PM	1	3/15/2003 5:14:03 PM	1
3/15/2003 4:42:02 PM	0	3/15/2003 5:15:15 PM	0
3/15/2003 4:48:50 PM	1	3/15/2003 5:23:52 PM	1
3/15/2003 4:52:14 PM	0	3/15/2003 5:25:03 PM	0
3/15/2003 4:58:38 PM	1	3/15/2003 5:33:51 PM	1
3/15/2003 5:02:26 PM	0	3/15/2003 5:35:27 PM	0
3/15/2003 5:08:51 PM	1	3/15/2003 5:43:28 PM	1
3/15/2003 5:11:27 PM	0	3/15/2003 5:45:28 PM	0
3/15/2003 5:17:51 PM	1	3/15/2003 5:53:52 PM	1
3/15/2003 5:20:51 PM	0	3/15/2003 5:55:04 PM	0
3/15/2003 5:27:39 PM	1	3/15/2003 6:03:52 PM	1
3/15/2003 5:31:15 PM	0	3/15/2003 6:05:16 PM	0
3/15/2003 5:38:03 PM	1	3/15/2003 6:14:05 PM	1
3/15/2003 5:41:40 PM	0	3/15/2003 6:15:29 PM	0
3/15/2003 5:47:52 PM	1	3/15/2003 6:23:41 PM	1
3/15/2003 5:50:52 PM	0	3/15/2003 6:25:29 PM	0
3/15/2003 5:58:04 PM	1	3/15/2003 6:34:05 PM	1
3/15/2003 6:00:28 PM	0	3/15/2003 6:35:05 PM	0
3/15/2003 6:07:41 PM	1	3/15/2003 6:43:30 PM	1
3/15/2003 6:10:53 PM	0	3/15/2003 6:45:18 PM	0
3/15/2003 6:17:53 PM	1	3/15/2003 6:53:42 PM	1
3/15/2003 6:21:05 PM	0	3/15/2003 6:55:30 PM	0
3/15/2003 6:27:53 PM	1	3/15/2003 7:03:54 PM	1
3/15/2003 6:31:05 PM	0	3/15/2003 7:05:07 PM	0
3/15/2003 6:38:17 PM	1	3/15/2003 7:14:19 PM	1
3/15/2003 6:40:42 PM	0	3/15/2003 7:15:42 PM	0
3/15/2003 6:47:42 PM	1	3/15/2003 7:23:55 PM	1
3/15/2003 6:51:18 PM	0	3/15/2003 7:25:43 PM	0
3/15/2003 6:57:54 PM	1	3/15/2003 7:33:31 PM	1
3/15/2003 7:01:18 PM	0	3/15/2003 7:35:19 PM	0
3/15/2003 7:08:07 PM	1	3/15/2003 7:44:43 PM	1
3/15/2003 7:11:19 PM	0	3/15/2003 7:45:56 PM	0
3/15/2003 7:18:19 PM	1	3/15/2003 7:54:20 PM	1
3/15/2003 7:21:31 PM	0	3/15/2003 7:55:32 PM	0
3/15/2003 7:28:07 PM	1	3/15/2003 8:04:20 PM	1
3/15/2003 7:31:43 PM	0	3/15/2003 8:05:32 PM	0
3/15/2003 7:37:55 PM	1	3/15/2003 8:14:45 PM	1
3/15/2003 7:42:19 PM	0	3/15/2003 8:15:57 PM	0
3/15/2003 7:48:20 PM	1	3/15/2003 8:24:33 PM	1
3/15/2003 7:51:56 PM	0	3/15/2003 8:25:57 PM	0
3/15/2003 7:58:44 PM	1	3/15/2003 8:34:09 PM	1
3/15/2003 8:01:20 PM	0	3/15/2003 8:35:21 PM	0
3/15/2003 8:09:08 PM	1	3/15/2003 8:43:45 PM	1
3/15/2003 8:12:20 PM	0	3/15/2003 8:44:57 PM	0
3/15/2003 8:18:56 PM	1	3/15/2003 8:53:58 PM	1
3/15/2003 8:21:33 PM	0	3/15/2003 8:55:09 PM	0
3/15/2003 8:28:57 PM	1	3/15/2003 9:03:46 PM	1
3/15/2003 8:32:09 PM	0	3/15/2003 9:04:58 PM	0
3/15/2003 8:37:45 PM	1	3/15/2003 9:13:34 PM	1
3/15/2003 8:41:22 PM	0	3/15/2003 9:15:23 PM	0
3/15/2003 8:47:34 PM	1	3/15/2003 9:24:35 PM	1
3/15/2003 8:51:22 PM	0	3/15/2003 9:26:22 PM	0
3/15/2003 8:58:10 PM	1	3/15/2003 9:35:47 PM	1
3/15/2003 9:00:46 PM	0	3/15/2003 9:36:59 PM	0
3/15/2003 9:07:59 PM	1	3/15/2003 9:46:35 PM	1
3/15/2003 9:10:35 PM	0	3/15/2003 9:47:47 PM	0
3/15/2003 9:18:22 PM	1	3/15/2003 9:56:48 PM	1

3/15/2003 9:21:35 PM	0	3/15/2003 9:58:12 PM	0
3/15/2003 9:30:11 PM	1	3/15/2003 10:07:48 PM	1
3/15/2003 9:32:35 PM	0	3/15/2003 10:09:12 PM	0
3/15/2003 9:40:47 PM	1	3/15/2003 10:19:36 PM	1
3/15/2003 9:43:23 PM	0	3/15/2003 10:20:48 PM	0
3/15/2003 9:50:47 PM	1	3/15/2003 10:30:01 PM	1
3/15/2003 9:53:11 PM	0	3/15/2003 10:31:49 PM	0
3/15/2003 10:01:48 PM	1	3/15/2003 10:40:37 PM	1
3/15/2003 10:03:48 PM	0	3/15/2003 10:42:13 PM	0
3/15/2003 10:12:48 PM	1	3/15/2003 10:52:02 PM	1
3/15/2003 10:15:12 PM	0	3/15/2003 10:53:14 PM	0
3/15/2003 10:25:00 PM	1	3/15/2003 11:03:38 PM	1
3/15/2003 10:27:12 PM	0	3/15/2003 11:04:50 PM	0
3/15/2003 10:34:49 PM	1	3/15/2003 11:14:38 PM	1
3/15/2003 10:37:13 PM	0	3/15/2003 11:15:50 PM	0
3/15/2003 10:45:37 PM	1	3/15/2003 11:24:50 PM	1
3/15/2003 10:48:01 PM	0	3/15/2003 11:26:02 PM	0
3/15/2003 10:57:13 PM	1	3/15/2003 11:35:51 PM	1
3/15/2003 10:59:25 PM	0	3/15/2003 11:37:02 PM	0
3/15/2003 11:08:14 PM	1	3/15/2003 11:46:27 PM	1
3/15/2003 11:10:38 PM	0	3/15/2003 11:47:39 PM	0
3/15/2003 11:19:14 PM	1	3/15/2003 11:58:39 PM	1
3/15/2003 11:21:26 PM	0	3/15/2003 11:59:51 PM	0
3/15/2003 11:30:03 PM	1		
3/15/2003 11:32:27 PM	0		
3/15/2003 11:40:39 PM	1		
3/15/2003 11:43:03 PM	0		
3/15/2003 11:51:39 PM	1		
3/15/2003 11:54:03 PM	0		

Via Lucero Lift Station			
Pump 1		Pump 2	
3/15/2003 12:05:58 AM	1		
3/15/2003 12:07:10 AM	0		
3/15/2003 12:23:04 AM	1		
3/15/2003 12:23:32 AM	0		
3/15/2003 12:36:44 AM	1		
3/15/2003 12:37:20 AM	0		
3/15/2003 12:49:56 AM	1		
3/15/2003 12:51:08 AM	0		
3/15/2003 1:07:11 AM	1		
3/15/2003 1:08:23 AM	0		
3/15/2003 1:25:48 AM	1		
3/15/2003 1:27:00 AM	0		
3/15/2003 1:41:15 AM	1		
3/15/2003 1:41:51 AM	0		
3/15/2003 1:48:45 AM	1		
3/15/2003 1:49:49 AM	0		
3/15/2003 1:58:31 AM	1		
3/15/2003 1:58:58 AM	0		
3/15/2003 2:12:02 AM	1		
3/15/2003 2:12:37 AM	0		
3/15/2003 2:25:23 AM	1		
3/15/2003 2:25:59 AM	0		
3/15/2003 2:35:44 AM	1		
3/15/2003 2:36:20 AM	0		
3/15/2003 2:43:50 AM	1		
3/15/2003 2:45:02 AM	0		
3/15/2003 2:51:29 AM	1		
3/15/2003 2:52:14 AM	0		
3/15/2003 2:58:41 AM	1		
3/15/2003 2:59:18 AM	0		
3/15/2003 3:11:18 AM	1		
3/15/2003 3:11:54 AM	0		
3/15/2003 3:17:54 AM	1		
3/15/2003 3:18:30 AM	0		
3/15/2003 3:24:30 AM	1		

3/15/2003 3:25:06 AM	0
3/15/2003 3:30:57 AM	1
3/15/2003 3:32:09 AM	0
3/15/2003 3:37:42 AM	1
3/15/2003 3:38:18 AM	0
3/15/2003 3:43:42 AM	1
3/15/2003 3:44:54 AM	0
3/15/2003 3:50:27 AM	1
3/15/2003 3:51:03 AM	0
3/15/2003 3:56:37 AM	1
3/15/2003 3:57:13 AM	0
3/15/2003 4:02:46 AM	1
3/15/2003 4:03:49 AM	0
3/15/2003 4:09:13 AM	1
3/15/2003 4:10:25 AM	0
3/15/2003 4:15:40 AM	1
3/15/2003 4:16:16 AM	0
3/15/2003 4:21:40 AM	1
3/15/2003 4:22:52 AM	0
3/15/2003 4:28:53 AM	1
3/15/2003 4:29:28 AM	0
3/15/2003 4:36:31 AM	1
3/15/2003 4:36:58 AM	0
3/15/2003 4:44:20 AM	1
3/15/2003 4:44:56 AM	0
3/15/2003 4:51:14 AM	1
3/15/2003 4:52:26 AM	0
3/15/2003 4:59:02 AM	1
3/15/2003 5:00:14 AM	0
3/15/2003 5:07:35 AM	1
3/15/2003 5:08:11 AM	0
3/15/2003 5:22:44 AM	1
3/15/2003 5:23:56 AM	0
3/15/2003 5:30:24 AM	1
3/15/2003 5:31:00 AM	0
3/15/2003 5:37:00 AM	1
3/15/2003 5:38:48 AM	0
3/15/2003 5:43:27 AM	1
3/15/2003 5:44:39 AM	0
3/15/2003 5:51:51 AM	1
3/15/2003 5:52:54 AM	0
3/15/2003 5:58:18 AM	1
3/15/2003 5:59:21 AM	0
3/15/2003 6:04:45 AM	1
3/15/2003 6:05:57 AM	0
3/15/2003 6:11:13 AM	1
3/15/2003 6:12:25 AM	0
3/15/2003 6:17:49 AM	1
3/15/2003 6:19:01 AM	0
3/15/2003 6:25:55 AM	1
3/15/2003 6:27:07 AM	0
3/15/2003 6:34:01 AM	1
3/15/2003 6:35:13 AM	0
3/15/2003 6:43:19 AM	1
3/15/2003 6:45:07 AM	0
3/15/2003 7:15:53 AM	1
3/15/2003 7:17:05 AM	0
3/15/2003 7:29:06 AM	1
3/15/2003 7:30:17 AM	0
3/15/2003 7:36:44 AM	1
3/15/2003 7:38:23 AM	0
3/15/2003 7:51:45 AM	1
3/15/2003 7:52:57 AM	0
3/15/2003 7:56:42 AM	1
3/15/2003 7:57:27 AM	0
3/15/2003 8:01:39 AM	1
3/15/2003 8:02:51 AM	0
3/15/2003 8:08:15 AM	1
3/15/2003 8:09:27 AM	0
3/15/2003 8:16:03 AM	1

3/15/2003 8:16:39 AM	0	
3/15/2003 8:21:28 AM	1	
3/15/2003 8:22:03 AM	0	
3/15/2003 8:26:25 AM	1	
3/15/2003 8:27:01 AM	0	
3/15/2003 9:43:15 AM	1	
3/15/2003 9:44:27 AM	0	
3/15/2003 9:48:03 AM	1	
3/15/2003 9:49:15 AM	0	
3/15/2003 9:52:51 AM	1	
3/15/2003 9:53:27 AM	0	
3/15/2003 9:57:12 AM	1	
3/15/2003 9:57:48 AM	0	
3/15/2003 10:01:33 AM	1	
3/15/2003 10:02:45 AM	0	
3/15/2003 10:06:48 AM	1	
3/15/2003 10:08:00 AM	0	
3/15/2003 10:10:51 AM	1	
3/15/2003 10:11:28 AM	0	
3/15/2003 10:15:31 AM	1	
3/15/2003 10:15:57 AM	0	
3/15/2003 10:20:46 AM	1	
3/15/2003 10:22:07 AM	0	
3/15/2003 10:25:34 AM	1	
3/15/2003 10:26:10 AM	0	
3/15/2003 10:31:07 AM	1	
3/15/2003 10:32:10 AM	0	
3/15/2003 10:34:25 AM	1	
3/15/2003 10:35:37 AM	0	
3/15/2003 10:36:58 AM	1	
3/15/2003 10:38:10 AM	0	
3/15/2003 10:39:58 AM	1	
3/15/2003 10:41:10 AM	0	
3/15/2003 10:42:58 AM	1	
3/15/2003 10:44:01 AM	0	
3/15/2003 10:45:49 AM	1	
3/15/2003 10:47:37 AM	0	
3/15/2003 10:48:13 AM	1	
3/15/2003 10:50:01 AM	0	
3/15/2003 10:51:04 AM	1	
3/15/2003 10:53:02 AM	0	
3/15/2003 10:54:05 AM	1	
3/15/2003 10:55:17 AM	0	
3/15/2003 10:56:28 AM	1	
3/15/2003 10:58:53 AM	0	
3/15/2003 10:59:29 AM	1	
3/15/2003 11:02:02 AM	0	
3/15/2003 11:02:37 AM	1	
3/15/2003 11:04:26 AM	0	
3/15/2003 11:05:10 AM	1	
3/15/2003 11:07:35 AM	0	
3/15/2003 11:08:47 AM	1	
3/15/2003 11:10:35 AM	0	
3/15/2003 11:11:56 AM	1	
3/15/2003 11:12:59 AM	0	
3/15/2003 11:13:35 AM	1	
3/15/2003 11:15:59 AM	0	
3/15/2003 11:17:20 AM	1	
3/15/2003 11:18:32 AM	0	
3/15/2003 11:20:20 AM	1	
3/15/2003 11:21:41 AM	0	
3/15/2003 11:22:53 AM	1	
3/15/2003 11:24:50 AM	0	
3/15/2003 11:26:02 AM	1	
3/15/2003 11:27:05 AM	0	
3/15/2003 11:29:29 AM	1	
3/15/2003 11:30:05 AM	0	
3/15/2003 11:33:05 AM	1	
3/15/2003 11:33:42 AM	0	
3/15/2003 11:36:41 AM	1	

3/15/2003 11:38:29 AM	0
3/15/2003 11:42:14 AM	1
3/15/2003 11:42:51 AM	0
3/15/2003 11:47:39 AM	1
3/15/2003 11:48:50 AM	0
3/15/2003 11:52:27 AM	1
3/15/2003 11:53:39 AM	0
3/15/2003 12:01:09 PM	1
3/15/2003 12:02:21 PM	0
3/15/2003 12:05:57 PM	1
3/15/2003 12:06:33 PM	0
3/15/2003 12:10:00 PM	1
3/15/2003 12:11:03 PM	0
3/15/2003 12:14:39 PM	1
3/15/2003 12:16:28 PM	0
3/15/2003 12:19:27 PM	1
3/15/2003 12:20:03 PM	0
3/15/2003 12:20:40 PM	1
3/15/2003 12:21:51 PM	0
3/15/2003 12:38:22 PM	1
3/15/2003 12:39:34 PM	0
3/15/2003 12:51:43 PM	1
3/15/2003 12:53:04 PM	0
3/15/2003 1:00:52 PM	1
3/15/2003 1:02:04 PM	0
3/15/2003 1:09:26 PM	1
3/15/2003 1:10:47 PM	0
3/15/2003 1:17:04 PM	1
3/15/2003 1:18:16 PM	0
3/15/2003 1:24:53 PM	1
3/15/2003 1:26:05 PM	0
3/15/2003 1:32:50 PM	1
3/15/2003 1:33:26 PM	0
3/15/2003 1:38:50 PM	1
3/15/2003 1:40:11 PM	0
3/15/2003 1:46:31 PM	1
3/15/2003 1:47:44 PM	0
3/15/2003 1:53:25 PM	1
3/15/2003 1:54:35 PM	0
3/15/2003 2:00:35 PM	1
3/15/2003 2:01:15 PM	0
3/15/2003 2:06:46 PM	1
3/15/2003 2:07:55 PM	0
3/15/2003 2:14:06 PM	1
3/15/2003 2:14:45 PM	0
3/15/2003 2:21:16 PM	1
3/15/2003 2:22:35 PM	0
3/15/2003 2:28:05 PM	1
3/15/2003 2:29:18 PM	0
3/15/2003 2:34:45 PM	1
3/15/2003 2:35:56 PM	0
3/15/2003 2:41:26 PM	1
3/15/2003 2:42:46 PM	0
3/15/2003 2:47:56 PM	1
3/15/2003 2:49:46 PM	0
3/15/2003 2:54:47 PM	1
3/15/2003 2:55:56 PM	0
3/15/2003 3:01:27 PM	1
3/15/2003 3:02:36 PM	0
3/15/2003 3:08:07 PM	1
3/15/2003 3:09:27 PM	0
3/15/2003 3:14:57 PM	1
3/15/2003 3:16:17 PM	0
3/15/2003 3:21:47 PM	1
3/15/2003 3:22:29 PM	0
3/15/2003 3:28:47 PM	1
3/15/2003 3:29:27 PM	0
3/15/2003 3:35:17 PM	1
3/15/2003 3:35:57 PM	0
3/15/2003 3:41:47 PM	1

3/15/2003 3:43:07 PM	0
3/15/2003 3:48:37 PM	1
3/15/2003 3:49:47 PM	0
3/15/2003 3:55:28 PM	1
3/15/2003 3:55:57 PM	0
3/15/2003 4:02:09 PM	1
3/15/2003 4:02:37 PM	0
3/15/2003 4:08:47 PM	1
3/15/2003 4:09:58 PM	0
3/15/2003 4:15:38 PM	1
3/15/2003 4:16:49 PM	0
3/15/2003 4:22:58 PM	1
3/15/2003 4:23:38 PM	0
3/15/2003 4:29:48 PM	1
3/15/2003 4:30:29 PM	0
3/15/2003 4:36:38 PM	1
3/15/2003 4:37:58 PM	0
3/15/2003 4:43:48 PM	1
3/15/2003 4:44:29 PM	0
3/15/2003 4:58:19 PM	1
3/15/2003 4:59:38 PM	0
3/15/2003 5:05:29 PM	1
3/15/2003 5:06:39 PM	0
3/15/2003 5:12:29 PM	1
3/15/2003 5:13:49 PM	0
3/15/2003 5:19:20 PM	1
3/15/2003 5:20:39 PM	0
3/15/2003 5:26:49 PM	1
3/15/2003 5:27:29 PM	0
3/15/2003 5:34:09 PM	1
3/15/2003 5:35:20 PM	0
3/15/2003 5:41:59 PM	1
3/15/2003 5:42:40 PM	0
3/15/2003 5:50:11 PM	1
3/15/2003 5:50:40 PM	0
3/15/2003 5:57:20 PM	1
3/15/2003 5:58:30 PM	0
3/15/2003 6:05:00 PM	1
3/15/2003 6:05:31 PM	0
3/15/2003 6:11:50 PM	1
3/15/2003 6:13:11 PM	0
3/15/2003 6:19:40 PM	1
3/15/2003 6:20:21 PM	0
3/15/2003 6:27:12 PM	1
3/15/2003 6:28:21 PM	0
3/15/2003 6:34:52 PM	1
3/15/2003 6:35:30 PM	0
3/15/2003 6:42:41 PM	1
3/15/2003 6:43:21 PM	0
3/15/2003 6:49:51 PM	1
3/15/2003 6:51:01 PM	0
3/15/2003 6:57:01 PM	1
3/15/2003 6:57:32 PM	0
3/15/2003 7:03:32 PM	1
3/15/2003 7:04:53 PM	0
3/15/2003 7:11:02 PM	1
3/15/2003 7:12:12 PM	0
3/15/2003 7:18:01 PM	1
3/15/2003 7:18:33 PM	0
3/15/2003 7:24:51 PM	1
3/15/2003 7:25:33 PM	0
3/15/2003 7:31:02 PM	1
3/15/2003 7:32:12 PM	0
3/15/2003 7:38:22 PM	1
3/15/2003 7:39:32 PM	0
3/15/2003 7:53:33 PM	1
3/15/2003 7:54:13 PM	0
3/15/2003 8:00:24 PM	1
3/15/2003 8:01:03 PM	0
3/15/2003 8:07:13 PM	1

3/15/2003 8:08:24 PM	0	
3/15/2003 8:15:03 PM	1	
3/15/2003 8:15:43 PM	0	
3/15/2003 8:22:24 PM	1	
3/15/2003 8:23:03 PM	0	
3/15/2003 8:29:53 PM	1	
3/15/2003 8:30:33 PM	0	
3/15/2003 8:36:53 PM	1	
3/15/2003 8:38:04 PM	0	
3/15/2003 8:44:13 PM	1	
3/15/2003 8:45:23 PM	0	
3/15/2003 8:52:24 PM	1	
3/15/2003 8:53:04 PM	0	
3/15/2003 8:59:54 PM	1	
3/15/2003 9:00:34 PM	0	
3/15/2003 9:07:13 PM	1	
3/15/2003 9:08:24 PM	0	
3/15/2003 9:14:34 PM	1	
3/15/2003 9:15:44 PM	0	
3/15/2003 9:21:54 PM	1	
3/15/2003 9:22:24 PM	0	
3/15/2003 9:29:54 PM	1	
3/15/2003 9:30:36 PM	0	
3/15/2003 9:37:25 PM	1	
3/15/2003 9:38:34 PM	0	
3/15/2003 9:45:34 PM	1	
3/15/2003 9:46:15 PM	0	
3/15/2003 9:53:04 PM	1	
3/15/2003 9:54:17 PM	0	
3/15/2003 10:00:56 PM	1	
3/15/2003 10:01:36 PM	0	
3/15/2003 10:08:56 PM	1	
3/15/2003 10:09:26 PM	0	
3/15/2003 10:16:56 PM	1	
3/15/2003 10:17:25 PM	0	
3/15/2003 10:25:56 PM	1	
3/15/2003 10:26:25 PM	0	
3/15/2003 10:34:35 PM	1	
3/15/2003 10:35:16 PM	0	
3/15/2003 10:42:36 PM	1	
3/15/2003 10:43:38 PM	0	
3/15/2003 10:51:17 PM	1	
3/15/2003 10:52:17 PM	0	
3/15/2003 10:59:56 PM	1	
3/15/2003 11:00:26 PM	0	
3/15/2003 11:08:08 PM	1	
3/15/2003 11:09:18 PM	0	
3/15/2003 11:17:17 PM	1	
3/15/2003 11:17:57 PM	0	
3/15/2003 11:25:47 PM	1	
3/15/2003 11:26:57 PM	0	
3/15/2003 11:35:38 PM	1	
3/15/2003 11:36:47 PM	0	
3/15/2003 11:46:18 PM	1	
3/15/2003 11:46:57 PM	0	
3/15/2003 11:56:08 PM	1	
3/15/2003 11:56:47 PM	0	

Breamar Lift Station			
Pump 1		Pump 2	
3/15/2003 12:01:28 AM	1	3/15/2003 12:07:10 AM	1
3/15/2003 12:01:55 AM	0	3/15/2003 12:07:46 AM	0
3/15/2003 12:13:01 AM	1	3/15/2003 12:18:52 AM	1
3/15/2003 12:13:37 AM	0	3/15/2003 12:19:29 AM	0
3/15/2003 12:24:07 AM	1	3/15/2003 12:29:05 AM	1
3/15/2003 12:24:43 AM	0	3/15/2003 12:29:41 AM	0
3/15/2003 12:33:43 AM	1	3/15/2003 12:39:35 AM	1
3/15/2003 12:34:56 AM	0	3/15/2003 12:40:11 AM	0

3/15/2003 11:56:03 AM	1	3/15/2003 11:59:21 AM	1
3/15/2003 11:57:24 AM	0	3/15/2003 12:00:33 PM	0
3/15/2003 12:02:21 PM	1	3/15/2003 12:05:21 PM	1
3/15/2003 12:03:33 PM	0	3/15/2003 12:06:33 PM	0
3/15/2003 12:08:21 PM	1	3/15/2003 12:11:03 PM	1
3/15/2003 12:09:24 PM	0	3/15/2003 12:12:15 PM	0
3/15/2003 12:14:39 PM	1	3/15/2003 12:17:39 PM	1
3/15/2003 12:15:24 PM	0	3/15/2003 12:18:15 PM	0
3/15/2003 12:20:40 PM	1	3/15/2003 12:23:40 PM	1
3/15/2003 12:21:51 PM	0	3/15/2003 12:24:52 PM	0
3/15/2003 12:26:39 PM	1	3/15/2003 12:29:40 PM	1
3/15/2003 12:27:51 PM	0	3/15/2003 12:30:52 PM	0
3/15/2003 12:33:16 PM	1	3/15/2003 12:35:49 PM	1
3/15/2003 12:33:52 PM	0	3/15/2003 12:37:01 PM	0
3/15/2003 12:38:58 PM	1	3/15/2003 12:41:58 PM	1
3/15/2003 12:40:10 PM	0	3/15/2003 12:43:19 PM	0
3/15/2003 12:45:52 PM	1	3/15/2003 12:49:01 PM	1
3/15/2003 12:46:28 PM	0	3/15/2003 12:49:46 PM	0
3/15/2003 12:52:19 PM	1	3/15/2003 1:02:04 PM	1
3/15/2003 12:53:04 PM	0	3/15/2003 1:03:16 PM	0
3/15/2003 12:59:04 PM	1	3/15/2003 1:08:13 PM	1
3/15/2003 12:59:40 PM	0	3/15/2003 1:09:34 PM	0
3/15/2003 1:05:14 PM	1	3/15/2003 1:15:08 PM	1
3/15/2003 1:06:26 PM	0	3/15/2003 1:15:43 PM	0
3/15/2003 1:12:07 PM	1	3/15/2003 1:21:53 PM	1
3/15/2003 1:12:44 PM	0	3/15/2003 1:22:29 PM	0
3/15/2003 1:18:16 PM	1	3/15/2003 1:28:38 PM	1
3/15/2003 1:19:28 PM	0	3/15/2003 1:29:14 PM	0
3/15/2003 1:24:53 PM	1	3/15/2003 1:35:14 PM	1
3/15/2003 1:26:05 PM	0	3/15/2003 1:35:50 PM	0
3/15/2003 1:31:38 PM	1	3/15/2003 1:42:00 PM	1
3/15/2003 1:32:50 PM	0	3/15/2003 1:42:44 PM	0
3/15/2003 1:38:14 PM	1	3/15/2003 1:48:54 PM	1
3/15/2003 1:39:35 PM	0	3/15/2003 1:49:36 PM	0
3/15/2003 1:45:19 PM	1	3/15/2003 1:55:15 PM	1
3/15/2003 1:46:31 PM	0	3/15/2003 1:56:25 PM	0
3/15/2003 1:52:05 PM	1	3/15/2003 2:02:35 PM	1
3/15/2003 1:53:25 PM	0	3/15/2003 2:03:15 PM	0
3/15/2003 1:58:45 PM	1	3/15/2003 2:07:55 PM	1
3/15/2003 2:00:05 PM	0	3/15/2003 2:09:06 PM	0
3/15/2003 2:05:35 PM	1	3/15/2003 2:14:45 PM	1
3/15/2003 2:06:16 PM	0	3/15/2003 2:15:56 PM	0
3/15/2003 2:11:05 PM	1	3/15/2003 2:21:56 PM	1
3/15/2003 2:12:16 PM	0	3/15/2003 2:22:35 PM	0
3/15/2003 2:18:16 PM	1	3/15/2003 2:28:46 PM	1
3/15/2003 2:19:35 PM	0	3/15/2003 2:29:55 PM	0
3/15/2003 2:25:37 PM	1	3/15/2003 2:36:26 PM	1
3/15/2003 2:26:16 PM	0	3/15/2003 2:37:46 PM	0
3/15/2003 2:32:56 PM	1	3/15/2003 2:44:06 PM	1
3/15/2003 2:33:36 PM	0	3/15/2003 2:45:16 PM	0
3/15/2003 2:40:06 PM	1	3/15/2003 2:51:06 PM	1
3/15/2003 2:41:26 PM	0	3/15/2003 2:52:17 PM	0
3/15/2003 2:47:56 PM	1	3/15/2003 2:58:28 PM	1
3/15/2003 2:48:36 PM	0	3/15/2003 2:59:36 PM	0
3/15/2003 2:54:47 PM	1	3/15/2003 3:05:48 PM	1
3/15/2003 2:55:56 PM	0	3/15/2003 3:06:56 PM	0
3/15/2003 3:01:56 PM	1	3/15/2003 3:13:08 PM	1
3/15/2003 3:03:06 PM	0	3/15/2003 3:14:17 PM	0
3/15/2003 3:09:27 PM	1	3/15/2003 3:21:16 PM	1
3/15/2003 3:10:36 PM	0	3/15/2003 3:21:56 PM	0
3/15/2003 3:16:57 PM	1	3/15/2003 3:28:07 PM	1
3/15/2003 3:18:08 PM	0	3/15/2003 3:29:27 PM	0
3/15/2003 3:24:27 PM	1	3/15/2003 3:35:17 PM	1
3/15/2003 3:25:47 PM	0	3/15/2003 3:36:37 PM	0
3/15/2003 3:31:49 PM	1	3/15/2003 3:42:27 PM	1
3/15/2003 3:32:57 PM	0	3/15/2003 3:43:37 PM	0
3/15/2003 3:38:59 PM	1	3/15/2003 3:50:17 PM	1
3/15/2003 3:40:07 PM	0	3/15/2003 3:50:58 PM	0
3/15/2003 3:46:47 PM	1	3/15/2003 3:57:57 PM	1
3/15/2003 3:47:28 PM	0	3/15/2003 3:58:27 PM	0

3/15/2003 3:54:08 PM	1	3/15/2003 4:05:08 PM	1
3/15/2003 3:54:47 PM	0	3/15/2003 4:06:18 PM	0
3/15/2003 4:01:29 PM	1	3/15/2003 4:13:08 PM	1
3/15/2003 4:02:37 PM	0	3/15/2003 4:14:28 PM	0
3/15/2003 4:09:28 PM	1	3/15/2003 4:20:38 PM	1
3/15/2003 4:09:58 PM	0	3/15/2003 4:21:48 PM	0
3/15/2003 4:16:49 PM	1	3/15/2003 4:28:39 PM	1
3/15/2003 4:18:08 PM	0	3/15/2003 4:29:48 PM	0
3/15/2003 4:24:58 PM	1	3/15/2003 4:36:38 PM	1
3/15/2003 4:25:39 PM	0	3/15/2003 4:37:58 PM	0
3/15/2003 4:32:58 PM	1	3/15/2003 4:45:08 PM	1
3/15/2003 4:33:39 PM	0	3/15/2003 4:45:48 PM	0
3/15/2003 4:41:09 PM	1	3/15/2003 4:52:38 PM	1
3/15/2003 4:41:49 PM	0	3/15/2003 4:53:49 PM	0
3/15/2003 4:49:09 PM	1	3/15/2003 5:00:58 PM	1
3/15/2003 4:49:51 PM	0	3/15/2003 5:01:40 PM	0
3/15/2003 4:56:20 PM	1	3/15/2003 5:08:40 PM	1
3/15/2003 4:57:39 PM	0	3/15/2003 5:09:59 PM	0
3/15/2003 5:04:49 PM	1	3/15/2003 5:16:21 PM	1
3/15/2003 5:05:29 PM	0	3/15/2003 5:17:39 PM	0
3/15/2003 5:13:10 PM	1	3/15/2003 5:24:19 PM	1
3/15/2003 5:13:49 PM	0	3/15/2003 5:25:29 PM	0
3/15/2003 5:20:39 PM	1	3/15/2003 5:32:21 PM	1
3/15/2003 5:21:20 PM	0	3/15/2003 5:33:29 PM	0
3/15/2003 5:28:39 PM	1	3/15/2003 5:40:10 PM	1
3/15/2003 5:29:50 PM	0	3/15/2003 5:40:49 PM	0
3/15/2003 5:36:29 PM	1	3/15/2003 5:48:10 PM	1
3/15/2003 5:37:10 PM	0	3/15/2003 5:48:51 PM	0
3/15/2003 5:44:00 PM	1	3/15/2003 5:56:40 PM	1
3/15/2003 5:45:10 PM	0	3/15/2003 5:57:20 PM	0
3/15/2003 5:52:20 PM	1	3/15/2003 6:05:00 PM	1
3/15/2003 5:53:40 PM	0	3/15/2003 6:06:21 PM	0
3/15/2003 6:01:00 PM	1	3/15/2003 6:13:11 PM	1
3/15/2003 6:01:42 PM	0	3/15/2003 6:13:51 PM	0
3/15/2003 6:09:30 PM	1	3/15/2003 6:21:32 PM	1
3/15/2003 6:10:00 PM	0	3/15/2003 6:22:10 PM	0
3/15/2003 6:17:01 PM	1	3/15/2003 6:29:31 PM	1
3/15/2003 6:18:20 PM	0	3/15/2003 6:30:51 PM	0
3/15/2003 6:26:01 PM	1	3/15/2003 6:38:01 PM	1
3/15/2003 6:26:31 PM	0	3/15/2003 6:39:11 PM	0
3/15/2003 6:33:42 PM	1	3/15/2003 6:46:51 PM	1
3/15/2003 6:34:52 PM	0	3/15/2003 6:47:31 PM	0
3/15/2003 6:42:51 PM	1	3/15/2003 6:55:12 PM	1
3/15/2003 6:43:21 PM	0	3/15/2003 6:55:52 PM	0
3/15/2003 6:51:01 PM	1	3/15/2003 7:03:32 PM	1
3/15/2003 6:51:41 PM	0	3/15/2003 7:04:21 PM	0
3/15/2003 6:59:21 PM	1	3/15/2003 7:12:23 PM	1
3/15/2003 7:00:31 PM	0	3/15/2003 7:12:52 PM	0
3/15/2003 7:08:01 PM	1	3/15/2003 7:20:32 PM	1
3/15/2003 7:08:31 PM	0	3/15/2003 7:21:12 PM	0
3/15/2003 7:16:02 PM	1	3/15/2003 7:28:32 PM	1
3/15/2003 7:17:22 PM	0	3/15/2003 7:29:42 PM	0
3/15/2003 7:24:51 PM	1	3/15/2003 7:37:01 PM	1
3/15/2003 7:25:33 PM	0	3/15/2003 7:38:22 PM	0
3/15/2003 7:33:22 PM	1	3/15/2003 7:45:43 PM	1
3/15/2003 7:34:02 PM	0	3/15/2003 7:46:13 PM	0
3/15/2003 7:41:22 PM	1	3/15/2003 7:53:33 PM	1
3/15/2003 7:42:03 PM	0	3/15/2003 7:54:43 PM	0
3/15/2003 7:49:52 PM	1	3/15/2003 8:01:43 PM	1
3/15/2003 7:50:23 PM	0	3/15/2003 8:02:23 PM	0
3/15/2003 7:57:52 PM	1	3/15/2003 8:09:32 PM	1
3/15/2003 7:58:23 PM	0	3/15/2003 8:10:13 PM	0
3/15/2003 8:05:22 PM	1	3/15/2003 8:17:33 PM	1
3/15/2003 8:06:33 PM	0	3/15/2003 8:18:03 PM	0
3/15/2003 8:13:24 PM	1	3/15/2003 8:25:43 PM	1
3/15/2003 8:14:03 PM	0	3/15/2003 8:26:54 PM	0
3/15/2003 8:21:24 PM	1	3/15/2003 8:33:43 PM	1
3/15/2003 8:22:24 PM	0	3/15/2003 8:34:24 PM	0
3/15/2003 8:29:53 PM	1	3/15/2003 8:42:15 PM	1
3/15/2003 8:30:33 PM	0	3/15/2003 8:43:35 PM	0

Skofield Lift Station	
Pump 1	Pump 2
3/15/2003 2:30:10 AM	1
3/15/2003 2:31:41 AM	0
3/15/2003 7:23:59 AM	1
3/15/2003 7:25:20 AM	0
3/15/2003 8:07:03 AM	1
3/15/2003 8:08:51 AM	0
3/15/2003 10:06:21 AM	1
3/15/2003 10:07:42 AM	0
3/15/2003 1:32:32 PM	1
3/15/2003 1:33:26 PM	0
3/15/2003 2:05:43 PM	1
3/15/2003 2:06:53 PM	0
3/15/2003 4:20:36 PM	1
3/15/2003 4:22:05 PM	0
3/15/2003 6:09:58 PM	1
3/15/2003 6:11:18 PM	0
3/15/2003 8:52:01 PM	1
3/15/2003 8:53:42 PM	0
3/15/2003 11:46:54 PM	1
3/15/2003 11:48:06 PM	0

Tallant Rd. Lift Station	
Pump 1	Pump 2
3/15/2003 2:05:21 AM	1
3/15/2003 2:06:59 AM	0
3/15/2003 4:03:26 AM	1
3/15/2003 4:06:00 AM	0
3/15/2003 5:47:16 AM	1
3/15/2003 5:50:04 AM	0
3/15/2003 6:26:00 AM	1
3/15/2003 6:29:02 AM	0
3/15/2003 6:53:18 AM	1
3/15/2003 6:56:20 AM	0
3/15/2003 7:21:46 AM	1
3/15/2003 7:24:06 AM	0
3/15/2003 7:47:54 AM	1
3/15/2003 7:50:56 AM	0
3/15/2003 8:10:19 AM	1
3/15/2003 8:13:49 AM	0
3/15/2003 8:35:30 AM	1
3/15/2003 8:37:51 AM	0
3/15/2003 9:00:42 AM	1
3/15/2003 9:03:02 AM	0
3/15/2003 9:24:16 AM	1
3/15/2003 9:28:01 AM	0
3/15/2003 9:48:05 AM	1
3/15/2003 9:50:39 AM	0
3/15/2003 10:12:07 AM	1
3/15/2003 10:15:09 AM	0
3/15/2003 10:36:23 AM	1
3/15/2003 10:39:25 AM	0
3/15/2003 11:00:11 AM	1
3/15/2003 11:02:45 AM	0
3/15/2003 11:24:55 AM	1
3/15/2003 11:27:57 AM	0
3/15/2003 11:55:43 AM	1
3/15/2003 11:58:03 AM	0
3/15/2003 12:31:39 PM	1
3/15/2003 12:33:31 PM	0
3/15/2003 1:05:15 PM	1
3/15/2003 1:07:49 PM	0
3/15/2003 1:39:06 PM	1
3/15/2003 1:41:39 PM	0
3/15/2003 2:17:12 PM	1
3/15/2003 3:30:31 AM	1
3/15/2003 3:33:34 AM	0
3/15/2003 5:05:58 AM	1
3/15/2003 5:09:28 AM	0
3/15/2003 6:12:42 AM	1
3/15/2003 6:18:04 AM	0
3/15/2003 6:38:22 AM	1
3/15/2003 6:42:48 AM	0
3/15/2003 7:05:40 AM	1
3/15/2003 7:09:52 AM	0
3/15/2003 7:33:26 AM	1
3/15/2003 7:39:44 AM	0
3/15/2003 7:57:28 AM	1
3/15/2003 8:02:51 AM	0
3/15/2003 8:20:21 AM	1
3/15/2003 8:26:39 AM	0
3/15/2003 8:46:01 AM	1
3/15/2003 8:51:36 AM	0
3/15/2003 9:11:27 AM	1
3/15/2003 9:15:53 AM	0
3/15/2003 9:35:29 AM	1
3/15/2003 9:40:36 AM	0
3/15/2003 9:58:35 AM	1
3/15/2003 10:03:57 AM	0
3/15/2003 10:24:01 AM	1
3/15/2003 10:28:13 AM	0
3/15/2003 10:46:39 AM	1
3/15/2003 10:51:19 AM	0
3/15/2003 11:10:41 AM	1
3/15/2003 11:15:35 AM	0
3/15/2003 11:39:23 AM	1
3/15/2003 11:43:07 AM	0
3/15/2003 12:11:21 PM	1
3/15/2003 12:14:51 PM	0
3/15/2003 12:49:51 PM	1
3/15/2003 12:53:49 PM	0
3/15/2003 1:19:02 PM	1
3/15/2003 1:22:31 PM	0
3/15/2003 1:55:55 PM	1
3/15/2003 1:59:35 PM	0
3/15/2003 2:38:28 PM	1

3/15/2003 2:19:35 PM	0	3/15/2003 2:41:35 PM	0
3/15/2003 3:04:31 PM	1	3/15/2003 3:30:11 PM	1
3/15/2003 3:07:05 PM	0	3/15/2003 3:33:41 PM	0
3/15/2003 3:58:04 PM	1	3/15/2003 4:15:41 PM	1
3/15/2003 4:00:27 PM	0	3/15/2003 4:19:32 PM	0
3/15/2003 4:39:20 PM	1	3/15/2003 5:06:07 PM	1
3/15/2003 4:41:54 PM	0	3/15/2003 5:09:25 PM	0
3/15/2003 5:33:38 PM	1	3/15/2003 6:03:10 PM	1
3/15/2003 5:36:01 PM	0	3/15/2003 6:07:01 PM	0
3/15/2003 6:36:10 PM	1	3/15/2003 7:04:58 PM	1
3/15/2003 6:38:12 PM	0	3/15/2003 7:09:12 PM	0
3/15/2003 7:30:28 PM	1	3/15/2003 8:00:33 PM	1
3/15/2003 7:32:51 PM	0	3/15/2003 8:03:40 PM	0
3/15/2003 8:24:34 PM	1	3/15/2003 8:53:11 PM	1
3/15/2003 8:26:24 PM	0	3/15/2003 8:56:51 PM	0
3/15/2003 9:28:46 PM	1	3/15/2003 10:09:40 PM	1
3/15/2003 9:30:36 PM	0	3/15/2003 10:13:09 PM	0
3/15/2003 10:46:43 PM	1	3/15/2003 11:27:37 PM	1
3/15/2003 10:49:06 PM	0	3/15/2003 11:31:06 PM	0

Linda Rd. Lift Station			
Pump 1		Pump 2	
3/15/2003 12:26:34 AM	1	3/15/2003 1:26:49 AM	1
3/15/2003 12:31:04 AM	0	3/15/2003 1:31:04 AM	0
3/15/2003 2:27:05 AM	1	3/15/2003 3:28:50 AM	1
3/15/2003 2:31:50 AM	0	3/15/2003 3:33:05 AM	0
3/15/2003 4:09:06 AM	1	3/15/2003 4:46:21 AM	1
3/15/2003 4:13:51 AM	0	3/15/2003 4:51:06 AM	0
3/15/2003 5:25:21 AM	1	3/15/2003 5:57:37 AM	1
3/15/2003 5:30:07 AM	0	3/15/2003 6:02:52 AM	0
3/15/2003 6:23:37 AM	1	3/15/2003 6:50:38 AM	1
3/15/2003 6:28:52 AM	0	3/15/2003 6:55:53 AM	0
3/15/2003 7:16:08 AM	1	3/15/2003 7:42:23 AM	1
3/15/2003 7:21:23 AM	0	3/15/2003 7:47:23 AM	0
3/15/2003 8:04:23 AM	1	3/15/2003 8:24:23 AM	1
3/15/2003 8:11:38 AM	0	3/15/2003 8:29:39 AM	0
3/15/2003 8:42:54 AM	1	3/15/2003 9:00:24 AM	1
3/15/2003 8:49:24 AM	0	3/15/2003 9:06:54 AM	0
3/15/2003 9:20:24 AM	1	3/15/2003 9:38:54 AM	1
3/15/2003 9:26:54 AM	0	3/15/2003 9:45:24 AM	0
3/15/2003 9:55:39 AM	1	3/15/2003 10:13:40 AM	1
3/15/2003 10:04:09 AM	0	3/15/2003 10:21:02 AM	0
3/15/2003 10:29:02 AM	1	3/15/2003 10:45:32 AM	1
3/15/2003 10:37:32 AM	0	3/15/2003 10:54:32 AM	0
3/15/2003 11:03:17 AM	1	3/15/2003 11:20:02 AM	1
3/15/2003 11:12:17 AM	0	3/15/2003 11:28:47 AM	0
3/15/2003 11:36:33 AM	1	3/15/2003 11:54:33 AM	1
3/15/2003 11:43:47 AM	0	3/15/2003 12:01:47 PM	0
3/15/2003 12:13:48 PM	1	3/15/2003 12:31:18 PM	1
3/15/2003 12:20:18 PM	0	3/15/2003 12:37:18 PM	0
3/15/2003 12:49:33 PM	1	3/15/2003 1:06:48 PM	1
3/15/2003 12:56:18 PM	0	3/15/2003 1:13:18 PM	0
3/15/2003 1:26:33 PM	1	3/15/2003 1:47:04 PM	1
3/15/2003 1:32:03 PM	0	3/15/2003 1:53:47 PM	0
3/15/2003 2:06:00 PM	1	3/15/2003 2:26:37 PM	1
3/15/2003 2:12:12 PM	0	3/15/2003 2:32:00 PM	0
3/15/2003 2:46:13 PM	1	3/15/2003 3:11:01 PM	1
3/15/2003 2:52:13 PM	0	3/15/2003 3:16:02 PM	0
3/15/2003 3:38:38 PM	1	3/15/2003 4:02:39 PM	1
3/15/2003 3:44:15 PM	0	3/15/2003 4:07:51 PM	0
3/15/2003 4:24:17 PM	1	3/15/2003 4:46:04 PM	1
3/15/2003 4:30:40 PM	0	3/15/2003 4:51:05 PM	0
3/15/2003 5:09:17 PM	1	3/15/2003 5:34:30 PM	1
3/15/2003 5:14:54 PM	0	3/15/2003 5:40:06 PM	0
3/15/2003 6:00:07 PM	1	3/15/2003 6:26:20 PM	1
3/15/2003 6:04:55 PM	0	3/15/2003 6:31:44 PM	0
3/15/2003 6:53:21 PM	1	3/15/2003 7:17:22 PM	1

3/15/2003 6:58:57 PM	0	3/15/2003 7:23:22 PM	0
3/15/2003 7:38:34 PM	1	3/15/2003 7:57:35 PM	1
3/15/2003 7:44:22 PM	0	3/15/2003 8:03:47 PM	0
3/15/2003 8:22:47 PM	1	3/15/2003 8:48:24 PM	1
3/15/2003 8:27:48 PM	0	3/15/2003 8:53:36 PM	0
3/15/2003 9:11:13 PM	1	3/15/2003 9:35:50 PM	1
3/15/2003 9:17:25 PM	0	3/15/2003 9:41:38 PM	0
3/15/2003 10:03:14 PM	1	3/15/2003 10:33:52 PM	1
3/15/2003 10:08:39 PM	0	3/15/2003 10:38:51 PM	0
3/15/2003 11:03:40 PM	1	3/15/2003 11:35:53 PM	1
3/15/2003 11:08:40 PM	0	3/15/2003 11:40:42 PM	0

Camino De La Luz			
Pump 1		Pump 2	
8/29/2007 12:00:00 AM	0	8/29/2007 12:00:00 AM	0
8/29/2007 12:03:31 AM	1	8/29/2007 12:16:46 AM	1
8/29/2007 12:05:02 AM	0	8/29/2007 12:18:17 AM	0
8/29/2007 12:32:40 AM	1	8/29/2007 12:51:12 AM	1
8/29/2007 12:33:25 AM	0	8/29/2007 12:51:57 AM	0
8/29/2007 1:13:09 AM	1	8/29/2007 1:36:14 AM	1
8/29/2007 1:15:02 AM	0	8/29/2007 1:36:59 AM	0
8/29/2007 1:54:46 AM	1	8/29/2007 2:23:09 AM	1
8/29/2007 1:55:31 AM	0	8/29/2007 2:25:25 AM	0
8/29/2007 2:51:54 AM	1	8/29/2007 3:16:07 AM	1
8/29/2007 2:52:40 AM	0	8/29/2007 3:16:53 AM	0
8/29/2007 3:47:54 AM	1	8/29/2007 4:17:48 AM	1
8/29/2007 3:49:25 AM	0	8/29/2007 4:19:19 AM	0
8/29/2007 4:43:09 AM	1	8/29/2007 5:10:24 AM	1
8/29/2007 4:43:54 AM	0	8/29/2007 5:11:54 AM	0
8/29/2007 5:38:46 AM	1	8/29/2007 6:02:37 AM	1
8/29/2007 5:39:32 AM	0	8/29/2007 6:03:22 AM	0
8/29/2007 6:17:45 AM	1	8/29/2007 6:29:06 AM	1
8/29/2007 6:18:30 AM	0	8/29/2007 6:30:37 AM	0
8/29/2007 6:38:33 AM	1	8/29/2007 6:46:07 AM	1
8/29/2007 6:38:56 AM	0	8/29/2007 6:46:53 AM	0
8/29/2007 6:55:13 AM	1	8/29/2007 7:03:32 AM	1
8/29/2007 6:55:58 AM	0	8/29/2007 7:04:17 AM	0
8/29/2007 7:09:35 AM	1	8/29/2007 7:15:39 AM	1
8/29/2007 7:11:06 AM	0	8/29/2007 7:16:24 AM	0
8/29/2007 7:21:19 AM	1	8/29/2007 7:27:22 AM	1
8/29/2007 7:22:04 AM	0	8/29/2007 7:28:30 AM	0
8/29/2007 7:33:48 AM	1	8/29/2007 7:41:45 AM	1
8/29/2007 7:34:34 AM	0	8/29/2007 7:42:30 AM	0
8/29/2007 7:46:17 AM	1	8/29/2007 7:51:35 AM	1
8/29/2007 7:47:48 AM	0	8/29/2007 7:52:21 AM	0
8/29/2007 7:56:30 AM	1	8/29/2007 8:00:18 AM	1
8/29/2007 7:58:01 AM	0	8/29/2007 8:01:48 AM	0
8/29/2007 8:04:05 AM	1	8/29/2007 8:09:22 AM	1
8/29/2007 8:05:35 AM	0	8/29/2007 8:10:08 AM	0
8/29/2007 8:15:03 AM	1	8/29/2007 8:20:21 AM	1
8/29/2007 8:15:48 AM	0	8/29/2007 8:21:06 AM	0
8/29/2007 8:24:08 AM	1	8/29/2007 8:27:55 AM	1
8/29/2007 8:24:53 AM	0	8/29/2007 8:29:03 AM	0
8/29/2007 8:33:35 AM	1	8/29/2007 8:37:22 AM	1
8/29/2007 8:34:21 AM	0	8/29/2007 8:39:16 AM	0
8/29/2007 8:43:03 AM	1	8/29/2007 8:49:06 AM	1
8/29/2007 8:43:48 AM	0	8/29/2007 8:49:51 AM	0
8/29/2007 8:54:24 AM	1	8/29/2007 9:01:12 AM	1
8/29/2007 8:55:09 AM	0	8/29/2007 9:02:43 AM	0
8/29/2007 9:08:24 AM	1	8/29/2007 9:15:35 AM	1
8/29/2007 9:09:55 AM	0	8/29/2007 9:16:21 AM	0
8/29/2007 9:22:47 AM	1	8/29/2007 9:28:50 AM	1
8/29/2007 9:25:03 AM	0	8/29/2007 9:30:21 AM	0
8/29/2007 9:34:53 AM	1	8/29/2007 9:39:26 AM	1
8/29/2007 9:36:24 AM	0	8/29/2007 9:41:42 AM	0
8/29/2007 9:45:52 AM	1	8/29/2007 9:52:40 AM	1
8/29/2007 9:46:37 AM	0	8/29/2007 9:53:26 AM	0
8/29/2007 9:59:29 AM	1	8/29/2007 10:06:18 AM	1
8/29/2007 10:00:14 AM	0	8/29/2007 10:07:48 AM	0
8/29/2007 10:16:08 AM	1	8/29/2007 10:24:27 AM	1
8/29/2007 10:16:53 AM	0	8/29/2007 10:25:58 AM	0
8/29/2007 10:33:32 AM	1	8/29/2007 10:42:14 AM	1
8/29/2007 10:35:03 AM	0	8/29/2007 10:43:00 AM	0
8/29/2007 10:49:03 AM	1	8/29/2007 10:56:37 AM	1
8/29/2007 10:50:34 AM	0	8/29/2007 10:57:22 AM	0
8/29/2007 11:04:11 AM	1	8/29/2007 11:12:30 AM	1
8/29/2007 11:05:42 AM	0	8/29/2007 11:14:02 AM	0
8/29/2007 11:21:58 AM	1	8/29/2007 11:31:48 AM	1
8/29/2007 11:22:44 AM	0	8/29/2007 11:32:34 AM	0
8/29/2007 11:37:52 AM	1	8/29/2007 11:44:40 AM	1
8/29/2007 11:38:37 AM	0	8/29/2007 11:45:26 AM	0

8/29/2007 11:52:14 AM	1	8/29/2007 12:00:34 PM	1
8/29/2007 11:53:00 AM	0	8/29/2007 12:01:42 PM	0
8/29/2007 12:10:01 PM	1	8/29/2007 12:19:06 PM	1
8/29/2007 12:10:47 PM	0	8/29/2007 12:19:52 PM	0
8/29/2007 12:30:27 PM	1	8/29/2007 12:41:03 PM	1
8/29/2007 12:31:13 PM	0	8/29/2007 12:41:48 PM	0
8/29/2007 12:50:31 PM	1	8/29/2007 1:01:06 PM	1
8/29/2007 12:51:16 PM	0	8/29/2007 1:01:52 PM	0
8/29/2007 1:11:42 PM	1	8/29/2007 1:21:10 PM	1
8/29/2007 1:12:50 PM	0	8/29/2007 1:21:55 PM	0
8/29/2007 1:32:31 PM	1	8/29/2007 1:45:00 PM	1
8/29/2007 1:33:16 PM	0	8/29/2007 1:45:45 PM	0
8/29/2007 1:56:21 PM	1	8/29/2007 2:08:05 PM	1
8/29/2007 1:57:06 PM	0	8/29/2007 2:08:50 PM	0
8/29/2007 2:20:11 PM	1	8/29/2007 2:30:02 PM	1
8/29/2007 2:20:57 PM	0	8/29/2007 2:31:55 PM	0
8/29/2007 2:41:00 PM	1	8/29/2007 2:55:23 PM	1
8/29/2007 2:41:46 PM	0	8/29/2007 2:56:08 PM	0
8/29/2007 3:05:13 PM	1	8/29/2007 3:15:26 PM	1
8/29/2007 3:06:44 PM	0	8/29/2007 3:16:11 PM	0
8/29/2007 3:26:02 PM	1	8/29/2007 3:37:45 PM	1
8/29/2007 3:26:47 PM	0	8/29/2007 3:39:16 PM	0
8/29/2007 3:46:50 PM	1	8/29/2007 3:56:18 PM	1
8/29/2007 3:47:36 PM	0	8/29/2007 3:57:04 PM	0
8/29/2007 4:04:37 PM	1	8/29/2007 4:16:44 PM	1
8/29/2007 4:05:23 PM	0	8/29/2007 4:17:52 PM	0
8/29/2007 4:26:12 PM	1	8/29/2007 4:35:16 PM	1
8/29/2007 4:26:57 PM	0	8/29/2007 4:36:02 PM	0
8/29/2007 4:45:07 PM	1	8/29/2007 4:55:42 PM	1
8/29/2007 4:46:37 PM	0	8/29/2007 4:56:28 PM	0
8/29/2007 5:03:39 PM	1	8/29/2007 5:11:13 PM	1
8/29/2007 5:05:10 PM	0	8/29/2007 5:11:58 PM	0
8/29/2007 5:18:24 PM	1	8/29/2007 5:26:21 PM	1
8/29/2007 5:19:55 PM	0	8/29/2007 5:27:07 PM	0
8/29/2007 5:34:18 PM	1	8/29/2007 5:41:52 PM	1
8/29/2007 5:35:03 PM	0	8/29/2007 5:42:37 PM	0
8/29/2007 5:46:47 PM	1	8/29/2007 5:52:05 PM	1
8/29/2007 5:47:33 PM	0	8/29/2007 5:52:50 PM	0
8/29/2007 5:58:08 PM	1	8/29/2007 6:05:43 PM	1
8/29/2007 5:59:16 PM	0	8/29/2007 6:06:50 PM	0
8/29/2007 6:13:40 PM	1	8/29/2007 6:20:28 PM	1
8/29/2007 6:15:55 PM	0	8/29/2007 6:21:13 PM	0
8/29/2007 6:27:16 PM	1	8/29/2007 6:33:20 PM	1
8/29/2007 6:28:02 PM	0	8/29/2007 6:34:05 PM	0
8/29/2007 6:41:39 PM	1	8/29/2007 6:49:13 PM	1
8/29/2007 6:42:25 PM	0	8/29/2007 6:49:59 PM	0
8/29/2007 6:57:56 PM	1	8/29/2007 7:06:38 PM	1
8/29/2007 6:58:41 PM	0	8/29/2007 7:07:23 PM	0
8/29/2007 7:15:42 PM	1	8/29/2007 7:24:02 PM	1
8/29/2007 7:16:28 PM	0	8/29/2007 7:24:47 PM	0
8/29/2007 7:31:13 PM	1	8/29/2007 7:39:33 PM	1
8/29/2007 7:31:59 PM	0	8/29/2007 7:40:18 PM	0
8/29/2007 7:45:59 PM	1	8/29/2007 7:52:02 PM	1
8/29/2007 7:46:44 PM	0	8/29/2007 7:52:47 PM	0
8/29/2007 7:58:51 PM	1	8/29/2007 8:05:39 PM	1
8/29/2007 7:59:36 PM	0	8/29/2007 8:06:25 PM	0
8/29/2007 8:13:13 PM	1	8/29/2007 8:20:25 PM	1
8/29/2007 8:13:59 PM	0	8/29/2007 8:21:10 PM	0
8/29/2007 8:27:13 PM	1	8/29/2007 8:33:39 PM	1
8/29/2007 8:27:59 PM	0	8/29/2007 8:34:25 PM	0
8/29/2007 8:41:36 PM	1	8/29/2007 8:50:18 PM	1
8/29/2007 8:42:21 PM	0	8/29/2007 8:51:04 PM	0
8/29/2007 8:57:52 PM	1	8/29/2007 9:06:12 PM	1
8/29/2007 8:58:38 PM	0	8/29/2007 9:07:42 PM	0
8/29/2007 9:12:38 PM	1	8/29/2007 9:19:49 PM	1
8/29/2007 9:13:23 PM	0	8/29/2007 9:20:34 PM	0
8/29/2007 9:27:23 PM	1	8/29/2007 9:36:28 PM	1
8/29/2007 9:28:31 PM	0	8/29/2007 9:37:13 PM	0
8/29/2007 9:44:25 PM	1	8/29/2007 9:51:59 PM	1
8/29/2007 9:45:10 PM	0	8/29/2007 9:52:44 PM	0

8/29/2007 9:59:55 PM	1	8/29/2007 10:09:01 PM	1
8/29/2007 10:01:49 PM	0	8/29/2007 10:09:46 PM	0
8/29/2007 10:16:35 PM	1	8/29/2007 10:23:23 PM	1
8/29/2007 10:17:20 PM	0	8/29/2007 10:24:54 PM	0
8/29/2007 10:31:20 PM	1	8/29/2007 10:38:09 PM	1
8/29/2007 10:32:06 PM	0	8/29/2007 10:38:54 PM	0
8/29/2007 10:51:23 PM	1	8/29/2007 10:59:43 PM	1
8/29/2007 10:52:09 PM	0	8/29/2007 11:00:28 PM	0
8/29/2007 11:06:54 PM	1	8/29/2007 11:13:20 PM	1
8/29/2007 11:07:39 PM	0	8/29/2007 11:14:06 PM	0
8/29/2007 11:20:31 PM	1	8/29/2007 11:29:36 PM	1
8/29/2007 11:21:40 PM	0	8/29/2007 11:30:22 PM	0
8/29/2007 11:38:41 PM	1	8/29/2007 11:51:10 PM	1
8/29/2007 11:39:26 PM	0	8/29/2007 11:51:56 PM	0

Via Lucero Lift Station			
Pump 1		Pump 2	
8/29/2007 12:00:00 AM	0	8/29/2007 12:00:00 AM	0
8/29/2007 12:07:54 AM	1	8/29/2007 12:20:19 AM	1
8/29/2007 12:08:36 AM	0	8/29/2007 12:21:01 AM	0
8/29/2007 12:31:43 AM	1	8/29/2007 12:43:47 AM	1
8/29/2007 12:32:26 AM	0	8/29/2007 12:45:31 AM	0
8/29/2007 12:57:37 AM	1	8/29/2007 1:11:25 AM	1
8/29/2007 12:58:18 AM	0	8/29/2007 1:12:05 AM	0
8/29/2007 1:26:56 AM	1	8/29/2007 1:41:25 AM	1
8/29/2007 1:27:37 AM	0	8/29/2007 1:42:48 AM	0
8/29/2007 1:56:36 AM	1	8/29/2007 2:10:45 AM	1
8/29/2007 1:57:38 AM	0	8/29/2007 2:12:08 AM	0
8/29/2007 2:26:37 AM	1	8/29/2007 2:41:28 AM	1
8/29/2007 2:27:39 AM	0	8/29/2007 2:42:50 AM	0
8/29/2007 2:55:36 AM	1	8/29/2007 3:09:25 AM	1
8/29/2007 2:56:17 AM	0	8/29/2007 3:11:08 AM	0
8/29/2007 3:56:00 AM	1	8/29/2007 3:41:30 AM	1
8/29/2007 3:56:41 AM	0	8/29/2007 3:42:11 AM	0
8/29/2007 4:31:53 AM	1	8/29/2007 4:14:17 AM	1
8/29/2007 4:32:54 AM	0	8/29/2007 4:15:19 AM	0
8/29/2007 5:07:04 AM	1	8/29/2007 4:50:30 AM	1
8/29/2007 5:08:27 AM	0	8/29/2007 4:51:33 AM	0
8/29/2007 5:34:20 AM	1	8/29/2007 5:20:32 AM	1
8/29/2007 5:35:22 AM	0	8/29/2007 5:21:34 AM	0
8/29/2007 5:58:50 AM	1	8/29/2007 5:47:27 AM	1
8/29/2007 5:59:51 AM	0	8/29/2007 5:49:52 AM	0
8/29/2007 6:15:44 AM	1	8/29/2007 6:08:09 AM	1
8/29/2007 6:16:25 AM	0	8/29/2007 6:08:50 AM	0
8/29/2007 6:30:13 AM	1	8/29/2007 6:23:19 AM	1
8/29/2007 6:31:37 AM	0	8/29/2007 6:25:04 AM	0
8/29/2007 6:41:37 AM	1	8/29/2007 6:36:26 AM	1
8/29/2007 6:43:20 AM	0	8/29/2007 6:37:08 AM	0
8/29/2007 6:53:21 AM	1	8/29/2007 6:47:49 AM	1
8/29/2007 6:54:03 AM	0	8/29/2007 6:48:31 AM	0
8/29/2007 7:04:44 AM	1	8/29/2007 6:59:13 AM	1
8/29/2007 7:05:25 AM	0	8/29/2007 6:59:54 AM	0
8/29/2007 7:14:44 AM	1	8/29/2007 7:09:54 AM	1
8/29/2007 7:15:26 AM	0	8/29/2007 7:10:36 AM	0
8/29/2007 7:23:01 AM	1	8/29/2007 7:18:32 AM	1
8/29/2007 7:23:45 AM	0	8/29/2007 7:20:57 AM	0
8/29/2007 7:31:59 AM	1	8/29/2007 7:27:10 AM	1
8/29/2007 7:33:23 AM	0	8/29/2007 7:28:54 AM	0
8/29/2007 7:40:17 AM	1	8/29/2007 7:36:28 AM	1
8/29/2007 7:42:00 AM	0	8/29/2007 7:37:10 AM	0
8/29/2007 7:49:35 AM	1	8/29/2007 7:45:06 AM	1
8/29/2007 7:50:37 AM	0	8/29/2007 7:46:30 AM	0
8/29/2007 7:59:57 AM	1	8/29/2007 7:54:26 AM	1
8/29/2007 8:01:20 AM	0	8/29/2007 7:56:09 AM	0
8/29/2007 8:10:39 AM	1	8/29/2007 8:05:07 AM	1
8/29/2007 8:11:20 AM	0	8/29/2007 8:06:51 AM	0
8/29/2007 8:20:39 AM	1	8/29/2007 8:15:07 AM	1

8/29/2007 8:21:20 AM	0	8/29/2007 8:16:10 AM	0
8/29/2007 8:31:42 AM	1	8/29/2007 8:26:10 AM	1
8/29/2007 8:33:25 AM	0	8/29/2007 8:26:52 AM	0
8/29/2007 8:43:25 AM	1	8/29/2007 8:37:54 AM	1
8/29/2007 8:44:06 AM	0	8/29/2007 8:38:35 AM	0
8/29/2007 8:55:30 AM	1	8/29/2007 8:50:19 AM	1
8/29/2007 8:57:13 AM	0	8/29/2007 8:51:01 AM	0
8/29/2007 9:07:14 AM	1	8/29/2007 9:01:43 AM	1
8/29/2007 9:08:37 AM	0	8/29/2007 9:03:27 AM	0
8/29/2007 9:19:59 AM	1	8/29/2007 9:13:06 AM	1
8/29/2007 9:20:41 AM	0	8/29/2007 9:13:47 AM	0
8/29/2007 9:33:48 AM	1	8/29/2007 9:26:53 AM	1
8/29/2007 9:34:29 AM	0	8/29/2007 9:27:35 AM	0
8/29/2007 9:45:53 AM	1	8/29/2007 9:39:39 AM	1
8/29/2007 9:46:54 AM	0	8/29/2007 9:42:05 AM	0
8/29/2007 9:58:59 AM	1	8/29/2007 9:53:07 AM	1
8/29/2007 9:59:40 AM	0	8/29/2007 9:53:51 AM	0
8/29/2007 10:10:22 AM	1	8/29/2007 10:05:11 AM	1
8/29/2007 10:12:06 AM	0	8/29/2007 10:05:55 AM	0
8/29/2007 10:22:27 AM	1	8/29/2007 10:16:35 AM	1
8/29/2007 10:23:29 AM	0	8/29/2007 10:17:16 AM	0
8/29/2007 10:34:52 AM	1	8/29/2007 10:40:23 AM	1
8/29/2007 10:36:16 AM	0	8/29/2007 10:41:47 AM	0
8/29/2007 10:46:15 AM	1	8/29/2007 10:52:28 AM	1
8/29/2007 10:47:18 AM	0	8/29/2007 10:53:10 AM	0
8/29/2007 10:58:20 AM	1	8/29/2007 11:04:33 AM	1
8/29/2007 11:00:04 AM	0	8/29/2007 11:06:58 AM	0
8/29/2007 11:10:46 AM	1	8/29/2007 11:17:39 AM	1
8/29/2007 11:11:26 AM	0	8/29/2007 11:18:21 AM	0
8/29/2007 11:25:15 AM	1	8/29/2007 11:32:51 AM	1
8/29/2007 11:25:56 AM	0	8/29/2007 11:33:32 AM	0
8/29/2007 11:39:03 AM	1	8/29/2007 11:45:59 AM	1
8/29/2007 11:40:26 AM	0	8/29/2007 11:46:40 AM	0
8/29/2007 11:54:13 AM	1	8/29/2007 12:01:50 PM	1
8/29/2007 11:54:56 AM	0	8/29/2007 12:02:31 PM	0
8/29/2007 12:10:27 PM	1	8/29/2007 12:18:03 PM	1
8/29/2007 12:11:08 PM	0	8/29/2007 12:18:44 PM	0
8/29/2007 12:24:56 PM	1	8/29/2007 12:32:32 PM	1
8/29/2007 12:26:20 PM	0	8/29/2007 12:33:13 PM	0
8/29/2007 12:39:47 PM	1	8/29/2007 12:47:44 PM	1
8/29/2007 12:41:33 PM	0	8/29/2007 12:48:25 PM	0
8/29/2007 12:54:37 PM	1	8/29/2007 1:01:31 PM	1
8/29/2007 12:55:19 PM	0	8/29/2007 1:02:13 PM	0
8/29/2007 1:07:43 PM	1	8/29/2007 1:14:38 PM	1
8/29/2007 1:09:07 PM	0	8/29/2007 1:15:19 PM	0
8/29/2007 1:21:32 PM	1	8/29/2007 1:28:26 PM	1
8/29/2007 1:22:14 PM	0	8/29/2007 1:29:08 PM	0
8/29/2007 1:36:02 PM	1	8/29/2007 1:43:57 PM	1
8/29/2007 1:36:43 PM	0	8/29/2007 1:44:39 PM	0
8/29/2007 1:50:32 PM	1	8/29/2007 1:57:25 PM	1
8/29/2007 1:51:33 PM	0	8/29/2007 1:58:27 PM	0
8/29/2007 2:04:19 PM	1	8/29/2007 2:11:33 PM	1
8/29/2007 2:05:21 PM	0	8/29/2007 2:12:15 PM	0
8/29/2007 2:19:50 PM	1	8/29/2007 2:27:26 PM	1
8/29/2007 2:20:33 PM	0	8/29/2007 2:28:07 PM	0
8/29/2007 2:33:38 PM	1	8/29/2007 2:41:14 PM	1
8/29/2007 2:34:21 PM	0	8/29/2007 2:42:17 PM	0
8/29/2007 2:48:11 PM	1	8/29/2007 2:57:06 PM	1
8/29/2007 2:49:31 PM	0	8/29/2007 2:58:52 PM	0
8/29/2007 3:07:07 PM	1	8/29/2007 3:14:43 PM	1
8/29/2007 3:08:10 PM	0	8/29/2007 3:15:45 PM	0
8/29/2007 3:21:57 PM	1	8/29/2007 3:29:32 PM	1
8/29/2007 3:22:39 PM	0	8/29/2007 3:30:14 PM	0
8/29/2007 3:36:28 PM	1	8/29/2007 3:44:23 PM	1
8/29/2007 3:37:08 PM	0	8/29/2007 3:45:04 PM	0
8/29/2007 3:50:15 PM	1	8/29/2007 3:58:11 PM	1
8/29/2007 3:51:58 PM	0	8/29/2007 3:58:53 PM	0
8/29/2007 4:05:05 PM	1	8/29/2007 4:12:40 PM	1
8/29/2007 4:06:28 PM	0	8/29/2007 4:14:05 PM	0
8/29/2007 4:19:34 PM	1	8/29/2007 4:25:06 PM	1

8/29/2007 4:20:57 PM	0	8/29/2007 4:26:28 PM	0
8/29/2007 4:30:17 PM	1	8/29/2007 4:34:45 PM	1
8/29/2007 4:30:58 PM	0	8/29/2007 4:36:29 PM	0
8/29/2007 4:49:15 PM	1	8/29/2007 4:44:46 PM	1
8/29/2007 4:50:58 PM	0	8/29/2007 4:45:27 PM	0
8/29/2007 4:59:57 PM	1	8/29/2007 4:54:47 PM	1
8/29/2007 5:01:44 PM	0	8/29/2007 4:55:28 PM	0
8/29/2007 5:12:22 PM	1	8/29/2007 5:06:09 PM	1
8/29/2007 5:14:06 PM	0	8/29/2007 5:07:11 PM	0
8/29/2007 5:27:33 PM	1	8/29/2007 5:19:37 PM	1
8/29/2007 5:28:15 PM	0	8/29/2007 5:21:00 PM	0
8/29/2007 5:39:18 PM	1	8/29/2007 5:33:46 PM	1
8/29/2007 5:40:41 PM	0	8/29/2007 5:34:27 PM	0
8/29/2007 5:49:39 PM	1	8/29/2007 5:44:48 PM	1
8/29/2007 5:51:01 PM	0	8/29/2007 5:45:29 PM	0
8/29/2007 6:00:20 PM	1	8/29/2007 5:54:48 PM	1
8/29/2007 6:01:02 PM	0	8/29/2007 5:55:31 PM	0
8/29/2007 6:12:25 PM	1	8/29/2007 6:06:12 PM	1
8/29/2007 6:13:06 PM	0	8/29/2007 6:07:14 PM	0
8/29/2007 6:24:29 PM	1	8/29/2007 6:18:37 PM	1
8/29/2007 6:25:52 PM	0	8/29/2007 6:19:19 PM	0
8/29/2007 6:35:11 PM	1	8/29/2007 6:30:01 PM	1
8/29/2007 6:36:34 PM	0	8/29/2007 6:31:26 PM	0
8/29/2007 6:45:53 PM	1	8/29/2007 6:40:42 PM	1
8/29/2007 6:47:16 PM	0	8/29/2007 6:42:46 PM	0
8/29/2007 6:56:35 PM	1	8/29/2007 6:52:05 PM	1
8/29/2007 6:58:18 PM	0	8/29/2007 6:52:47 PM	0
8/29/2007 7:18:19 PM	1	8/29/2007 7:01:25 PM	1
8/29/2007 7:20:03 PM	0	8/29/2007 7:03:11 PM	0
8/29/2007 7:30:44 PM	1	8/29/2007 7:13:08 PM	1
8/29/2007 7:31:26 PM	0	8/29/2007 7:13:50 PM	0
8/29/2007 7:42:48 PM	1	8/29/2007 7:24:32 PM	1
8/29/2007 7:43:30 PM	0	8/29/2007 7:25:54 PM	0
8/29/2007 7:53:52 PM	1	8/29/2007 7:35:55 PM	1
8/29/2007 7:55:35 PM	0	8/29/2007 7:36:36 PM	0
8/29/2007 8:04:33 PM	1	8/29/2007 8:00:04 PM	1
8/29/2007 8:05:57 PM	0	8/29/2007 8:00:46 PM	0
8/29/2007 8:15:15 PM	1	8/29/2007 8:09:44 PM	1
8/29/2007 8:16:38 PM	0	8/29/2007 8:11:27 PM	0
8/29/2007 8:26:17 PM	1	8/29/2007 8:20:46 PM	1
8/29/2007 8:27:40 PM	0	8/29/2007 8:22:30 PM	0
8/29/2007 8:36:18 PM	1	8/29/2007 8:31:29 PM	1
8/29/2007 8:38:01 PM	0	8/29/2007 8:32:30 PM	0
8/29/2007 8:47:20 PM	1	8/29/2007 8:42:09 PM	1
8/29/2007 8:48:02 PM	0	8/29/2007 8:42:51 PM	0
8/29/2007 8:58:03 PM	1	8/29/2007 8:52:52 PM	1
8/29/2007 8:59:04 PM	0	8/29/2007 8:53:33 PM	0
8/29/2007 9:09:46 PM	1	8/29/2007 9:03:34 PM	1
8/29/2007 9:10:27 PM	0	8/29/2007 9:05:37 PM	0
8/29/2007 9:22:11 PM	1	8/29/2007 9:15:17 PM	1
8/29/2007 9:23:55 PM	0	8/29/2007 9:17:01 PM	0
8/29/2007 9:34:16 PM	1	8/29/2007 9:28:45 PM	1
8/29/2007 9:35:59 PM	0	8/29/2007 9:29:26 PM	0
8/29/2007 9:48:24 PM	1	8/29/2007 9:41:31 PM	1
8/29/2007 9:49:06 PM	0	8/29/2007 9:42:33 PM	0
8/29/2007 10:02:57 PM	1	8/29/2007 9:55:39 PM	1
8/29/2007 10:03:35 PM	0	8/29/2007 9:56:21 PM	0
8/29/2007 10:17:45 PM	1	8/29/2007 10:10:30 PM	1
8/29/2007 10:18:26 PM	0	8/29/2007 10:11:11 PM	0
8/29/2007 10:33:37 PM	1	8/29/2007 10:25:21 PM	1
8/29/2007 10:34:19 PM	0	8/29/2007 10:26:01 PM	0
8/29/2007 10:49:09 PM	1	8/29/2007 10:40:51 PM	1
8/29/2007 10:50:11 PM	0	8/29/2007 10:41:54 PM	0
8/29/2007 11:05:42 PM	1	8/29/2007 10:56:44 PM	1
8/29/2007 11:06:23 PM	0	8/29/2007 10:57:47 PM	0
8/29/2007 11:24:21 PM	1	8/29/2007 11:14:40 PM	1
8/29/2007 11:25:01 PM	0	8/29/2007 11:15:22 PM	0
8/29/2007 11:45:23 PM	1	8/29/2007 11:55:45 PM	1
8/29/2007 11:46:25 PM	0	8/29/2007 11:57:28 PM	0

Breamar Lift Station		
Pump 1		Pump 2
8/29/2007 12:00:00 AM	0	8/29/2007 12:00:00 AM 0
8/29/2007 12:23:06 AM	1	8/29/2007 12:02:24 AM 1
8/29/2007 12:24:50 AM	0	8/29/2007 12:04:06 AM 0
8/29/2007 1:06:14 AM	1	8/29/2007 12:42:45 AM 1
8/29/2007 1:08:17 AM	0	8/29/2007 12:44:30 AM 0
8/29/2007 2:08:20 AM	1	8/29/2007 1:34:31 AM 1
8/29/2007 2:09:43 AM	0	8/29/2007 1:36:35 AM 0
8/29/2007 3:10:06 AM	1	8/29/2007 2:39:45 AM 1
8/29/2007 3:12:10 AM	0	8/29/2007 2:41:28 AM 0
8/29/2007 4:07:23 AM	1	8/29/2007 3:40:49 AM 1
8/29/2007 4:08:46 AM	0	8/29/2007 3:42:53 AM 0
8/29/2007 5:02:35 AM	1	8/29/2007 4:33:36 AM 1
8/29/2007 5:04:40 AM	0	8/29/2007 4:35:20 AM 0
8/29/2007 6:11:15 AM	1	8/29/2007 5:37:47 AM 1
8/29/2007 6:12:38 AM	0	8/29/2007 5:39:51 AM 0
8/29/2007 6:51:38 AM	1	8/29/2007 6:35:45 AM 1
8/29/2007 6:54:03 AM	0	8/29/2007 6:37:29 AM 0
8/29/2007 7:14:44 AM	1	8/29/2007 7:04:44 AM 1
8/29/2007 7:16:49 AM	0	8/29/2007 7:06:48 AM 0
8/29/2007 7:33:23 AM	1	8/29/2007 7:24:45 AM 1
8/29/2007 7:35:47 AM	0	8/29/2007 7:26:28 AM 0
8/29/2007 7:49:35 AM	1	8/29/2007 7:42:00 AM 1
8/29/2007 7:52:21 AM	0	8/29/2007 7:44:25 AM 0
8/29/2007 8:06:10 AM	1	8/29/2007 7:57:31 AM 1
8/29/2007 8:08:34 AM	0	8/29/2007 8:00:41 AM 0
8/29/2007 8:23:03 AM	1	8/29/2007 8:14:47 AM 1
8/29/2007 8:25:28 AM	0	8/29/2007 8:16:51 AM 0
8/29/2007 8:38:57 AM	1	8/29/2007 8:30:19 AM 1
8/29/2007 8:41:23 AM	0	8/29/2007 8:33:25 AM 0
8/29/2007 8:56:32 AM	1	8/29/2007 8:47:34 AM 1
8/29/2007 8:58:36 AM	0	8/29/2007 8:49:40 AM 0
8/29/2007 9:14:07 AM	1	8/29/2007 9:05:30 AM 1
8/29/2007 9:16:12 AM	0	8/29/2007 9:07:57 AM 0
8/29/2007 9:32:25 AM	1	8/29/2007 9:23:06 AM 1
8/29/2007 9:34:29 AM	0	8/29/2007 9:25:11 AM 0
8/29/2007 9:50:01 AM	1	8/29/2007 9:40:42 AM 1
8/29/2007 9:52:26 AM	0	8/29/2007 9:43:07 AM 0
8/29/2007 10:09:00 AM	1	8/29/2007 9:59:20 AM 1
8/29/2007 10:11:04 AM	0	8/29/2007 10:01:24 AM 0
8/29/2007 10:27:58 AM	1	8/29/2007 10:18:18 AM 1
8/29/2007 10:30:03 AM	0	8/29/2007 10:20:23 AM 0
8/29/2007 10:47:59 AM	1	8/29/2007 10:37:59 AM 1
8/29/2007 10:50:03 AM	0	8/29/2007 10:40:23 AM 0
8/29/2007 11:07:39 AM	1	8/29/2007 10:57:39 AM 1
8/29/2007 11:10:04 AM	0	8/29/2007 11:00:04 AM 0
8/29/2007 11:29:03 AM	1	8/29/2007 11:17:39 AM 1
8/29/2007 11:31:07 AM	0	8/29/2007 11:19:43 AM 0
8/29/2007 11:51:10 AM	1	8/29/2007 11:39:45 AM 1
8/29/2007 11:52:51 AM	0	8/29/2007 11:41:28 AM 0
8/29/2007 12:11:50 PM	1	8/29/2007 12:01:08 PM 1
8/29/2007 12:13:33 PM	0	8/29/2007 12:03:12 PM 0
8/29/2007 12:33:13 PM	1	8/29/2007 12:21:50 PM 1
8/29/2007 12:34:59 PM	0	8/29/2007 12:23:54 PM 0
8/29/2007 12:55:19 PM	1	8/29/2007 12:44:37 PM 1
8/29/2007 12:57:02 PM	0	8/29/2007 12:45:59 PM 0
8/29/2007 1:18:46 PM	1	8/29/2007 1:06:42 PM 1
8/29/2007 1:20:30 PM	0	8/29/2007 1:08:25 PM 0
8/29/2007 1:43:57 PM	1	8/29/2007 1:30:30 PM 1
8/29/2007 1:46:01 PM	0	8/29/2007 1:32:55 PM 0
8/29/2007 2:11:33 PM	1	8/29/2007 1:57:04 PM 1
8/29/2007 2:13:38 PM	0	8/29/2007 1:59:08 PM 0
8/29/2007 2:39:10 PM	1	8/29/2007 2:25:02 PM 1
8/29/2007 2:41:14 PM	0	8/29/2007 2:26:44 PM 0
8/29/2007 3:05:02 PM	1	8/29/2007 2:52:17 PM 1
8/29/2007 3:06:46 PM	0	8/29/2007 2:54:01 PM 0

8/29/2007 3:31:40 PM	1	8/29/2007 3:18:10 PM	1
8/29/2007 3:33:42 PM	0	8/29/2007 3:20:13 PM	0
8/29/2007 4:00:16 PM	1	8/29/2007 3:45:46 PM	1
8/29/2007 4:01:59 PM	0	8/29/2007 3:47:50 PM	0
8/29/2007 4:29:35 PM	1	8/29/2007 4:14:27 PM	1
8/29/2007 4:32:02 PM	0	8/29/2007 4:16:28 PM	0
8/29/2007 4:57:32 PM	1	8/29/2007 4:44:04 PM	1
8/29/2007 4:59:57 PM	0	8/29/2007 4:46:30 PM	0
8/29/2007 5:24:27 PM	1	8/29/2007 5:11:00 PM	1
8/29/2007 5:26:10 PM	0	8/29/2007 5:12:43 PM	0
8/29/2007 5:51:42 PM	1	8/29/2007 5:38:35 PM	1
8/29/2007 5:54:08 PM	0	8/29/2007 5:40:41 PM	0
8/29/2007 6:16:34 PM	1	8/29/2007 6:04:49 PM	1
8/29/2007 6:18:37 PM	0	8/29/2007 6:06:12 PM	0
8/29/2007 6:39:41 PM	1	8/29/2007 6:28:17 PM	1
8/29/2007 6:41:23 PM	0	8/29/2007 6:30:43 PM	0
8/29/2007 7:02:27 PM	1	8/29/2007 6:51:24 PM	1
8/29/2007 7:04:30 PM	0	8/29/2007 6:53:28 PM	0
8/29/2007 7:22:48 PM	1	8/29/2007 7:13:08 PM	1
8/29/2007 7:25:13 PM	0	8/29/2007 7:15:13 PM	0
8/29/2007 7:43:30 PM	1	8/29/2007 7:33:10 PM	1
8/29/2007 7:45:35 PM	0	8/29/2007 7:35:13 PM	0
8/29/2007 8:03:51 PM	1	8/29/2007 7:53:52 PM	1
8/29/2007 8:05:57 PM	0	8/29/2007 7:56:16 PM	0
8/29/2007 8:23:53 PM	1	8/29/2007 8:14:34 PM	1
8/29/2007 8:26:17 PM	0	8/29/2007 8:16:38 PM	0
8/29/2007 8:43:32 PM	1	8/29/2007 8:33:53 PM	1
8/29/2007 8:45:58 PM	0	8/29/2007 8:35:37 PM	0
8/29/2007 9:05:17 PM	1	8/29/2007 8:54:14 PM	1
8/29/2007 9:07:21 PM	0	8/29/2007 8:56:39 PM	0
8/29/2007 9:26:20 PM	1	8/29/2007 9:16:00 PM	1
8/29/2007 9:28:45 PM	0	8/29/2007 9:18:23 PM	0
8/29/2007 9:48:24 PM	1	8/29/2007 9:37:43 PM	1
8/29/2007 9:50:50 PM	0	8/29/2007 9:39:27 PM	0
8/29/2007 10:11:11 PM	1	8/29/2007 9:59:48 PM	1
8/29/2007 10:12:54 PM	0	8/29/2007 10:01:32 PM	0
8/29/2007 10:34:19 PM	1	8/29/2007 10:22:14 PM	1
8/29/2007 10:36:43 PM	0	8/29/2007 10:24:18 PM	0
8/29/2007 11:02:36 PM	1	8/29/2007 10:47:25 PM	1
8/29/2007 11:03:58 PM	0	8/29/2007 10:50:11 PM	0
8/29/2007 11:31:35 PM	1	8/29/2007 11:16:24 PM	1
8/29/2007 11:33:39 PM	0	8/29/2007 11:18:28 PM	0
		8/29/2007 11:48:09 PM	1
		8/29/2007 11:49:52 PM	0

La Colina Lift Station			
Pump 1		Pump 2	
8/29/2007 12:00:00 AM	0	8/29/2007 12:00:00 AM	0
8/29/2007 12:20:50 AM	1	8/29/2007 1:27:26 AM	1
8/29/2007 12:29:08 AM	0	8/29/2007 1:30:32 AM	0
8/29/2007 2:27:29 AM	1	8/29/2007 3:52:01 AM	1
8/29/2007 2:34:23 AM	0	8/29/2007 3:54:25 AM	0
8/29/2007 5:04:29 AM	1	8/29/2007 6:01:45 AM	1
8/29/2007 5:12:04 AM	0	8/29/2007 6:04:52 AM	0
8/29/2007 6:31:47 AM	1	8/29/2007 6:55:14 AM	1
8/29/2007 6:43:10 AM	0	8/29/2007 6:59:03 AM	0
8/29/2007 7:08:21 AM	1	8/29/2007 7:34:56 AM	1
8/29/2007 7:27:40 AM	0	8/29/2007 7:38:43 AM	0
8/29/2007 7:48:43 AM	1	8/29/2007 8:15:18 AM	1
8/29/2007 8:03:34 AM	0	8/29/2007 8:19:05 AM	0
8/29/2007 8:30:49 AM	1	8/29/2007 8:53:56 AM	1
8/29/2007 8:42:33 AM	0	8/29/2007 8:57:44 AM	0
8/29/2007 9:09:07 AM	1	8/29/2007 9:36:02 AM	1
8/29/2007 9:19:49 AM	0	8/29/2007 9:38:48 AM	0
8/29/2007 9:52:16 AM	1	8/29/2007 10:19:31 AM	1
8/29/2007 10:01:55 AM	0	8/29/2007 10:22:37 AM	0
8/29/2007 10:37:48 AM	1	8/29/2007 11:05:03 AM	1
8/29/2007 10:48:30 AM	0	8/29/2007 11:08:10 AM	0

8/29/2007 11:25:46 AM	1	8/29/2007 11:53:22 AM	1
8/29/2007 11:35:47 AM	0	8/29/2007 11:56:29 AM	0
8/29/2007 12:13:23 PM	1	8/29/2007 12:38:55 PM	1
8/29/2007 12:23:02 PM	0	8/29/2007 12:43:03 PM	0
8/29/2007 12:56:51 PM	1	8/29/2007 1:25:09 PM	1
8/29/2007 1:08:15 PM	0	8/29/2007 1:28:16 PM	0
8/29/2007 1:47:34 PM	1	8/29/2007 2:18:59 PM	1
8/29/2007 1:58:17 PM	0	8/29/2007 2:22:06 PM	0
8/29/2007 2:43:29 PM	1	8/29/2007 3:13:50 PM	1
8/29/2007 2:55:34 PM	0	8/29/2007 3:16:57 PM	0
8/29/2007 3:33:51 PM	1	8/29/2007 4:04:55 PM	1
8/29/2007 3:46:16 PM	0	8/29/2007 4:07:40 PM	0
8/29/2007 4:24:14 PM	1	8/29/2007 4:55:59 PM	1
8/29/2007 4:39:25 PM	0	8/29/2007 4:59:05 PM	0
8/29/2007 5:14:36 PM	1	8/29/2007 5:45:20 PM	1
8/29/2007 5:28:04 PM	0	8/29/2007 5:48:26 PM	0
8/29/2007 6:04:39 PM	1	8/29/2007 6:34:19 PM	1
8/29/2007 6:19:49 PM	0	8/29/2007 6:37:26 PM	0
8/29/2007 6:53:18 PM	1	8/29/2007 7:26:04 PM	1
8/29/2007 7:09:51 PM	0	8/29/2007 7:28:50 PM	0
8/29/2007 7:44:01 PM	1	8/29/2007 9:16:50 PM	1
8/29/2007 8:06:06 PM	0	8/29/2007 9:19:56 PM	0
8/29/2007 8:40:57 PM	1	8/29/2007 11:12:05 PM	1
8/29/2007 9:03:23 PM	0	8/29/2007 11:15:12 PM	0
8/29/2007 9:35:49 PM	1		
8/29/2007 9:53:04 PM	0		
8/29/2007 10:29:18 PM	1		
8/29/2007 10:50:41 PM	0		
8/29/2007 11:37:58 PM	1		
8/29/2007 11:53:50 PM	0		

Skofield Lift Station			
Pump 1		Pump 2	
8/29/2007 12:00:00 AM	0	8/29/2007 12:00:00 AM	0

Tallant Rd. Lift Station			
Pump 1		Pump 2	
8/29/2007 12:00:00 AM	0	8/29/2007 12:00:00 AM	0
8/29/2007 7:10:05 AM	1	8/29/2007 6:32:06 AM	1
8/29/2007 7:13:20 AM	0	8/29/2007 6:36:48 AM	0
8/29/2007 9:44:54 AM	1	8/29/2007 7:33:36 AM	1
8/29/2007 9:47:04 AM	0	8/29/2007 7:37:34 AM	0
8/29/2007 4:26:46 PM	1	8/29/2007 2:11:52 PM	1
8/29/2007 4:28:56 PM	0	8/29/2007 2:15:28 PM	0
8/29/2007 7:36:18 PM	1	8/29/2007 5:56:50 PM	1
8/29/2007 7:38:29 PM	0	8/29/2007 6:00:27 PM	0
		8/29/2007 8:46:07 PM	1
		8/29/2007 8:50:49 PM	0

Linda Rd. Lift Station			
Pump 1		Pump 2	
8/29/2007 12:00:00 AM	0	8/29/2007 12:00:00 AM	0
8/29/2007 1:26:44 AM	1	8/29/2007 3:45:36 AM	1
8/29/2007 1:33:33 AM	0	8/29/2007 3:52:02 AM	0
8/29/2007 5:51:37 AM	1	8/29/2007 6:23:01 AM	1
8/29/2007 5:58:48 AM	0	8/29/2007 6:31:20 AM	0
8/29/2007 6:49:53 AM	1	8/29/2007 7:15:14 AM	1
8/29/2007 6:58:58 AM	0	8/29/2007 7:25:04 AM	0
8/29/2007 7:43:59 AM	1	8/29/2007 8:13:30 AM	1
8/29/2007 7:52:42 AM	0	8/29/2007 8:21:50 AM	0

8/29/2007 8:43:46 AM	1	8/29/2007 9:10:38 AM	1
8/29/2007 8:52:29 AM	0	8/29/2007 9:18:58 AM	0
8/29/2007 9:46:36 AM	1	8/29/2007 10:24:48 AM	1
8/29/2007 9:53:24 AM	0	8/29/2007 10:31:37 AM	0
8/29/2007 11:04:54 AM	1	8/29/2007 11:46:33 AM	1
8/29/2007 11:13:37 AM	0	8/29/2007 11:54:06 AM	0
8/29/2007 12:23:14 PM	1	8/29/2007 1:02:58 PM	1
8/29/2007 12:30:48 PM	0	8/29/2007 1:11:17 PM	0
8/29/2007 1:45:44 PM	1	8/29/2007 2:28:51 PM	1
8/29/2007 1:52:55 PM	0	8/29/2007 2:35:40 PM	0
8/29/2007 3:15:24 PM	1	8/29/2007 4:14:04 PM	1
8/29/2007 3:22:58 PM	0	8/29/2007 4:20:52 PM	0
8/29/2007 4:54:32 PM	1	8/29/2007 5:30:29 PM	1
8/29/2007 5:01:22 PM	0	8/29/2007 5:38:03 PM	0
8/29/2007 6:02:17 PM	1	8/29/2007 6:34:03 PM	1
8/29/2007 6:10:36 PM	0	8/29/2007 6:42:45 PM	0
8/29/2007 7:05:05 PM	1	8/29/2007 7:34:13 PM	1
8/29/2007 7:13:25 PM	0	8/29/2007 7:42:32 PM	0
8/29/2007 8:07:31 PM	1	8/29/2007 8:37:47 PM	1
8/29/2007 8:15:51 PM	0	8/29/2007 8:46:29 PM	0
8/29/2007 9:06:56 PM	1	8/29/2007 9:37:58 PM	1
8/29/2007 9:15:15 PM	0	8/29/2007 9:45:31 PM	0
8/29/2007 10:08:36 PM	1	8/29/2007 10:49:06 PM	1
8/29/2007 10:16:33 PM	0	8/29/2007 10:55:31 PM	0
8/29/2007 11:29:58 PM	1		
8/29/2007 11:36:23 PM	0		

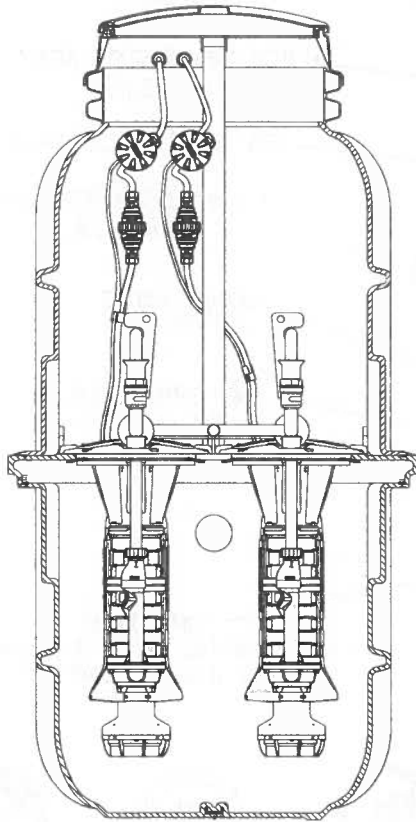
APPENDIX E

Individual Pump Station Cut Sheets

E/ONE EXTREME

S E R I E S

DH152



General Applications

The size, efficiency and operating economy of the DH152 make it an ideal choice for multiple dwellings, waterfront property, subdivision developments and marinas. The DH152 is ideally suited for both new and existing communities.

General Features

The DH152 grinder pump station is a complete unit that includes: two grinder pumps with check valves, HDPE (high density polyethylene) tank and controls. The DH152 is packaged into a single complete unit, ready for installation.

All solids are ground into fine particles, allowing them to pass easily through the pump, check valve and small-diameter pipelines. Even objects that are not normally found in sewage, such as plastic, rubber, fiber, wood, etc., are ground into fine particles.

The 1 1/4-inch discharge connection is adaptable to any piping materials, thereby allowing it to meet local code requirements.

The tank is made of tough corrosion-resistant HDPE. The optimum tank capacity of 150 gallons is based on computer studies of water usage patterns. A single DH152 is ideal for up to four average, single-family homes, and can also be used for up to 12 average, single-family homes with the consent of the factory. This model can accommodate flows of 3000 GPD.

The internal check valve assembly, located in each grinder pump, is custom-designed for non-clog, trouble-free operation.

The grinder pump is automatically activated and runs infrequently for very short periods. The annual energy consumption is typically that of a 40-watt light bulb.

Units are available for indoor and outdoor installations. Outdoor units are designed to accommodate a wide range of burial depths.

Operational Information

Motor

1 hp, 1,725 rpm, high torque, capacitor start, thermally protected, 120/240V, 60 Hz, 1 phase

Inlet Connections

4-inch inlet grommet standard for DWV pipe. Other inlet configurations available from the factory.

Discharge Connections

Pump discharge terminates in 1 1/4-inch NPT female thread. Can easily be adapted to 1 1/4-inch PVC pipe or any other material required by local codes.

*Discharge**

15 gpm at 0 psig (per pump)

11 gpm at 40 psig (per pump)

7.8 gpm at 80 psig (per pump)

Control Panel

This station is designed to use the Alternating Control Panel, MOD T260.

Overload Capacity

The maximum pressure that the pump can generate is limited by the motor characteristics. The motor generates a pressure well below the rating of the piping and appurtenances. The automatic reset feature does not require manual operation following overload.

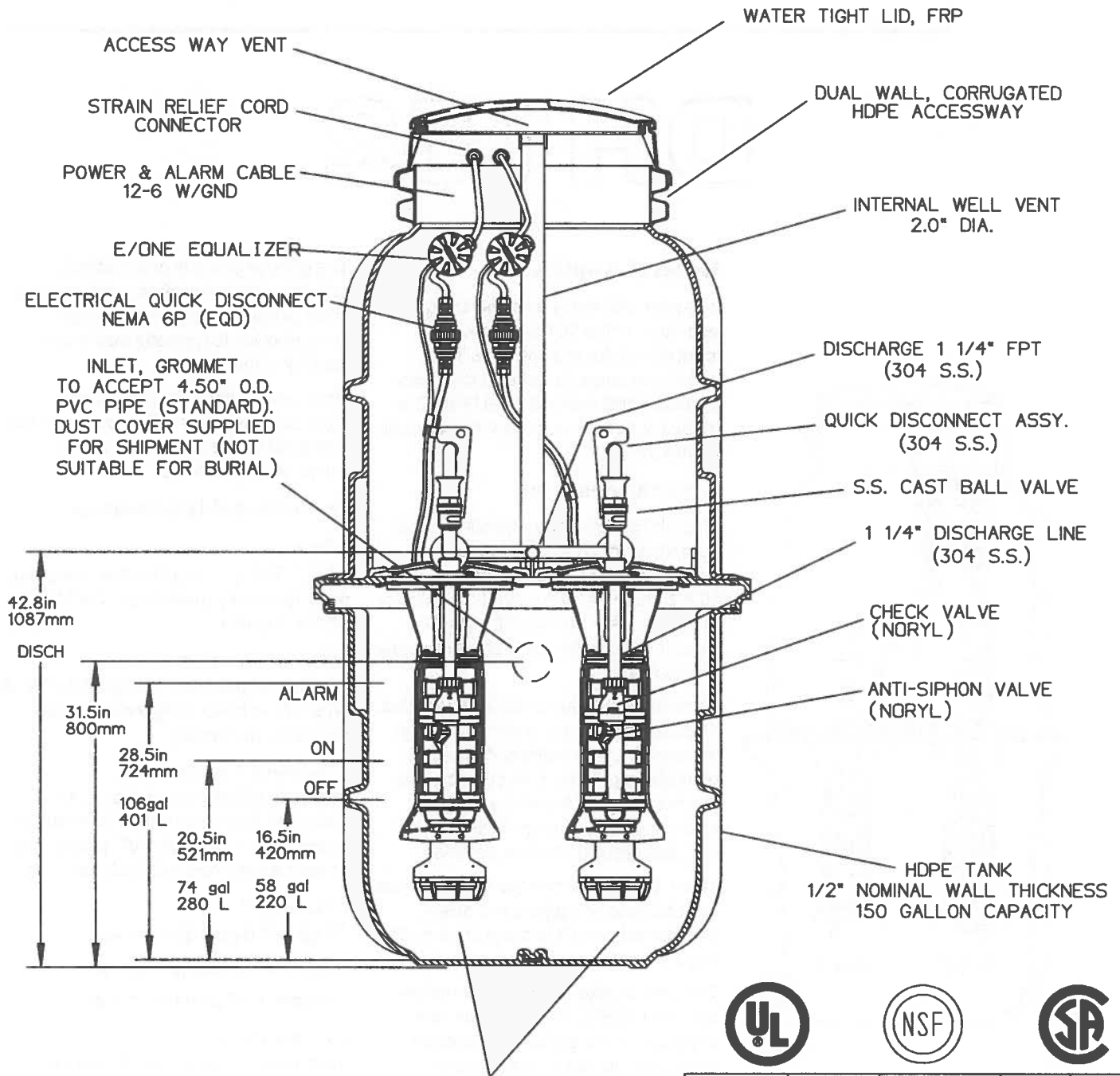
Patent Numbers: 5,752,315
5,562,254 5,439,180

* Discharge data includes loss through check valve, which is minimal.

NA0052P01

DH152

FIELD JOINT REQUIRED
FOR MODELS
DH152-129 & DH152-160



SEMI-POSITIVE DISPLACEMENT TYPE PUMP
EACH DIRECTLY DRIVEN BY A 1 HP MOTOR

BALLAST REQUIREMENTS

A CONCRETE ANCHOR IS REQUIRED
ON ALL OUTDOOR MODEL DH152 STATIONS
SPECIFIC CONCRETE DIMENSIONS ARE REQUIRED
TO ACHIEVE NECESSARY BALLAST EFFECT
SEE INSTALLATION INSTRUCTIONS FOR FURTHER DETAILS



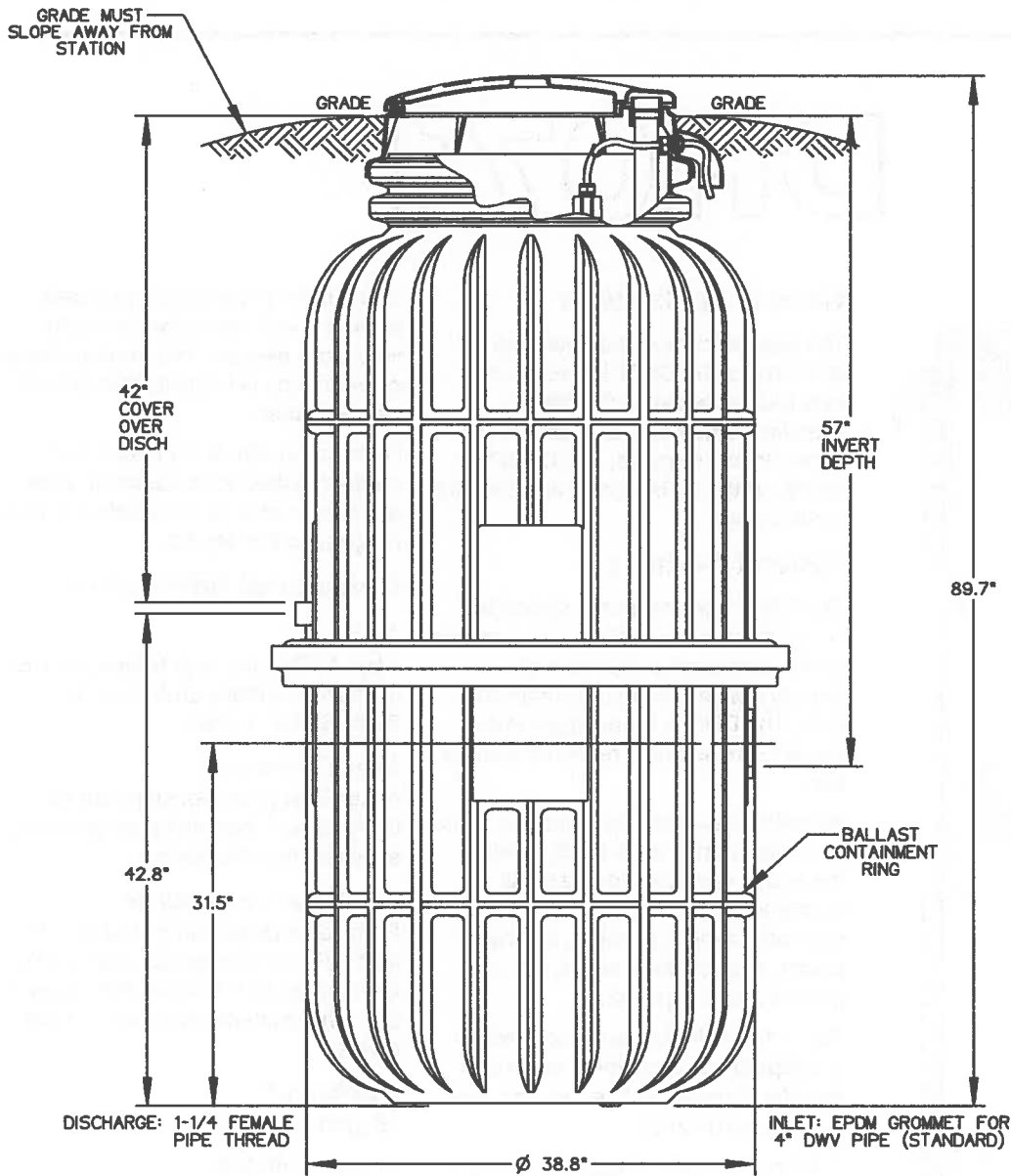
LNT	GAE	04/24/07	—	
DR BY	CHK'D	DATE	ISSUE	SCALE



MODEL DH152
DETAIL SHEET

NA0052P02

DH152-93



AD	CAH	4/25/07	-	1/16
DR BY	CHK'D	DATE	ISSUE	SCALE

BALLAST REQUIREMENTS

A CONCRETE ANCHOR IS REQUIRED ON ALL MODEL DH152-93 STATIONS

SPECIFIC CONCRETE DIMENSIONS ARE REQUIRED TO ACHIEVE NECESSARY BALLAST EFFECT

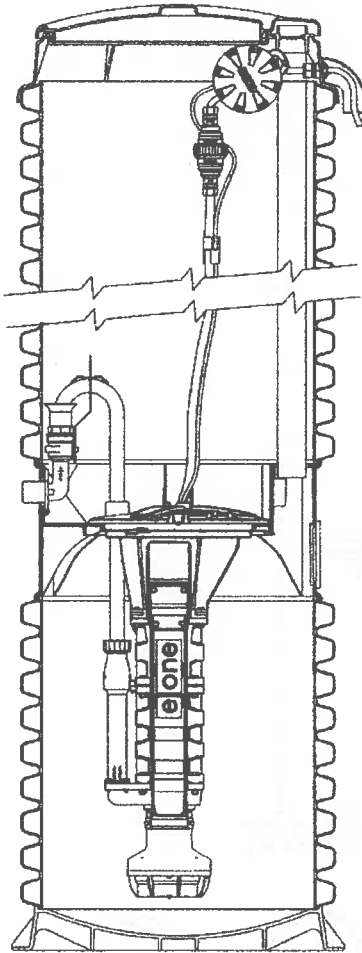
SEE INSTALLATION INSTRUCTIONS FOR FURTHER DETAILS



MODEL DH152-93

NA0052P04

DH071



General Applications

The size, efficiency and operating economy of the DH071 make it your best choice for single dwellings, waterfront property, subdivision developments and marinas. The DH071 is ideally suited for both new and existing communities.

General Features

The DH071 grinder pump station is a complete unit that includes: the grinder pump, check valve, HDPE (high density polyethylene) tank and controls. The DH071 is packaged into a single complete unit, ready for installation.

All solids are ground into fine particles, allowing them to pass easily through the pump, check valve and small diameter pipelines. Even objects not normally found in sewage, such as plastic, rubber, fiber, wood, etc., are ground into fine particles.

The 1 1/4-inch discharge connection is adaptable to any piping materials, thereby allowing us to meet your local code requirements.

The tank is made of tough corrosion-resistant HDPE. The optimum tank capacity of 70 gallons is based on computer studies of water usage patterns. A single DH071 is ideal for one, average single-family home and can also be used for up to two average single-family homes where codes allow and with consent of the factory. This model can accommodate flows of 700 GPD.

The internal check valve assembly, located in the grinder pump, is custom-designed for non-clog, trouble-free operation.

The grinder pump is automatically activated and runs infrequently for very short periods. The annual energy consumption is typically that of a 40-watt light bulb.

Units are available for indoor and outdoor installations. Outdoor units are designed to accommodate a wide range of burial depths.

Operational Information

Motor

1 hp, 1,725 rpm, high torque, capacitor start, thermally protected, 120/240V, 60 Hz, 1 phase

Inlet Connections

4-inch inlet grommet standard for DWV pipe. Other inlet configurations available from the factory.

Discharge Connections

Pump discharge terminates in 1 1/4-inch NPT female thread. Can easily be adapted to 1 1/4-inch PVC pipe or any other material required by local codes.

*Discharge**

15 gpm at 0 psig

11 gpm at 40 psig

7.8 gpm at 80 psig

Overload Capacity

The maximum pressure that the pump can generate is limited by the motor characteristics. The motor generates a pressure well below the rating of the piping and appurtenances. The automatic reset feature does not require manual operation following overload.

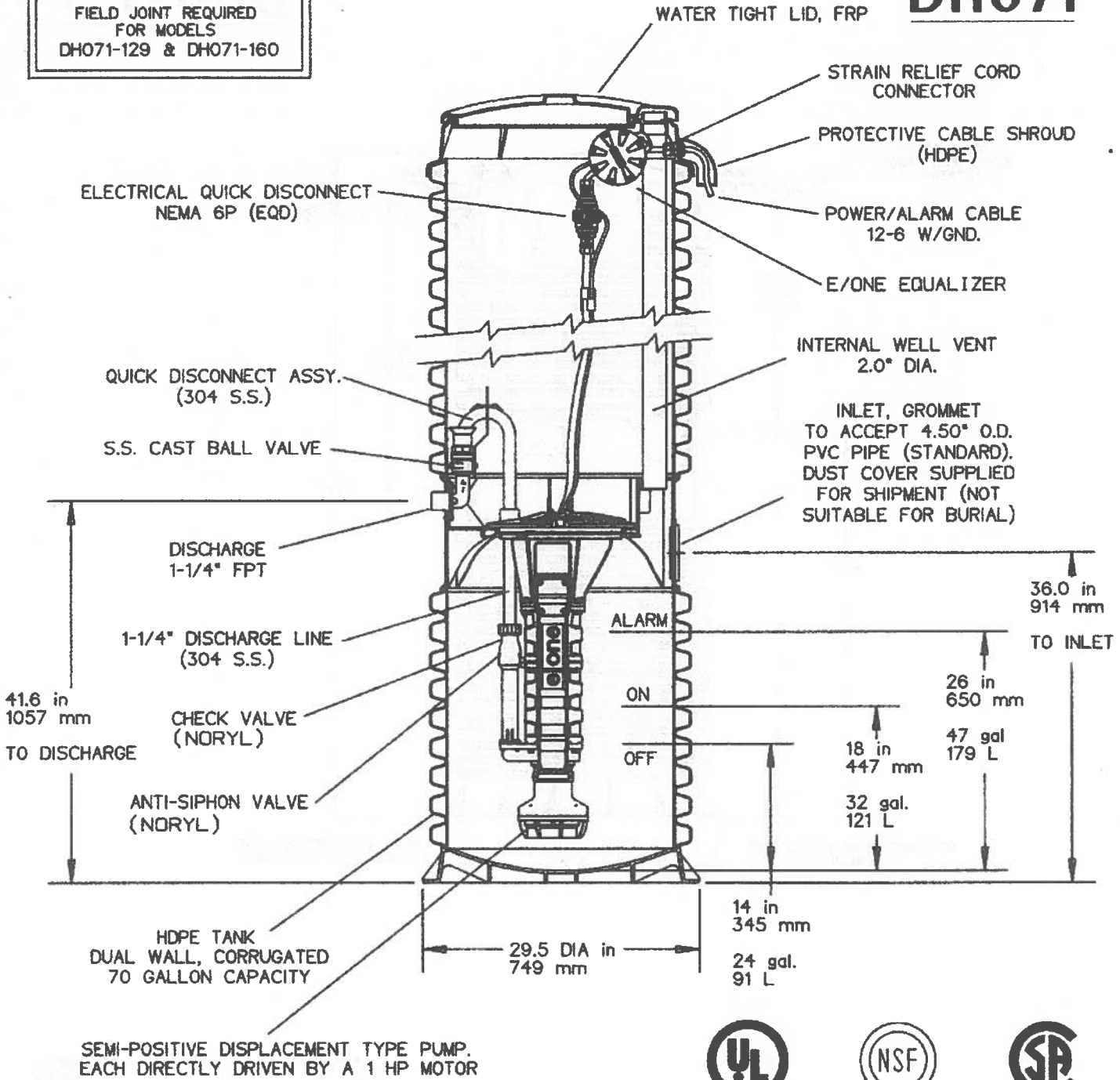
Patent Numbers: 5,752,315
5,562,254 5,439,180

* Discharge data includes loss through check valve, which is minimal.

NA0050P01

DH071

FIELD JOINT REQUIRED
FOR MODELS
DH071-129 & DH071-160



SEMI-POSITIVE DISPLACEMENT TYPE PUMP.
EACH DIRECTLY DRIVEN BY A 1 HP MOTOR



LNT	GAE	04/24/07	-	
DR BY	CHK'D	DATE	ISSUE	SCALE

BALLAST REQUIREMENTS

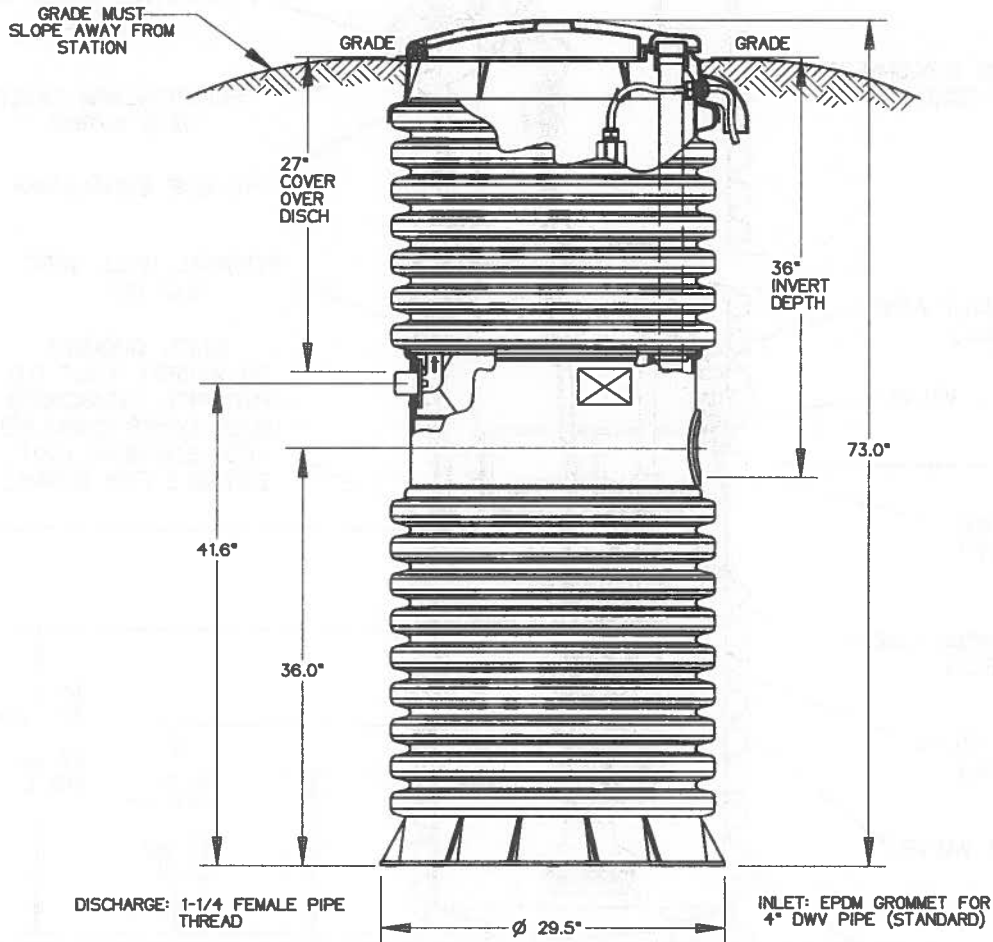
A CONCRETE ANCHOR IS REQUIRED
ON ALL OUTDOOR MODEL DH071 STATIONS
SPECIFIC CONCRETE DIMENSIONS ARE REQUIRED
TO ACHIEVE NECESSARY BALLAST EFFECT
SEE INSTALLATION INSTRUCTIONS FOR FURTHER DETAILS



MODEL DH071
DETAIL SHEET

NA0050P02

DH071-74



AD	CAH	04/25/07	-	1/16
DR BY	CHK'D	DATE	ISSUE	SCALE

BALLAST REQUIREMENTS

A CONCRETE ANCHOR IS REQUIRED ON ALL MODEL DH071-74 STATIONS

SPECIFIC CONCRETE DIMENSIONS ARE REQUIRED TO ACHIEVE NECESSARY BALLAST EFFECT

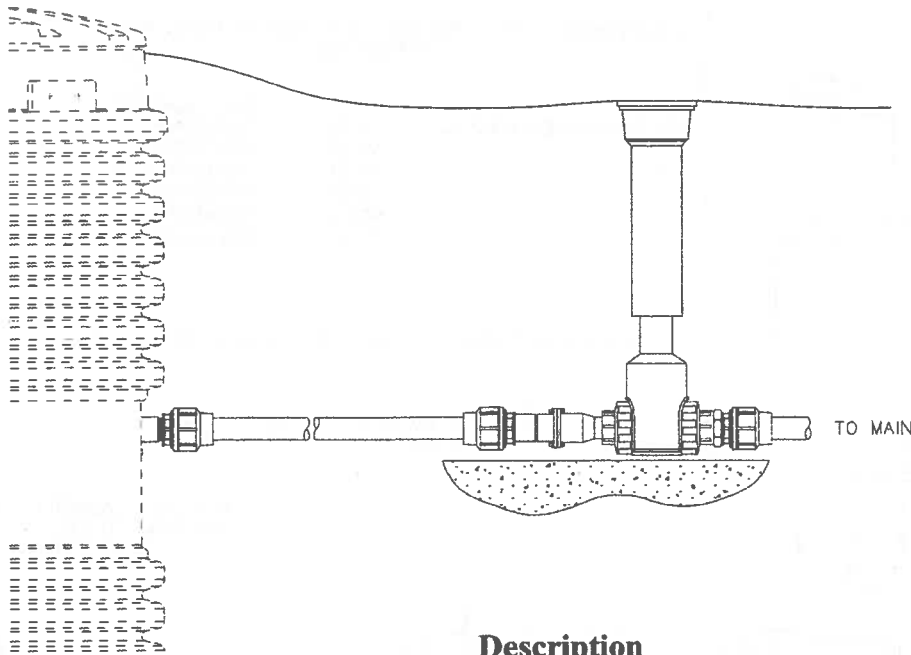
SEE INSTALLATION INSTRUCTIONS FOR FURTHER DETAILS



MODEL DH071-74

NA0050P05

Forced Sewer Main Service Lateral Kits SDR 11 HDPE Pipe featuring Engineered Thermoplastic Valves and Fittings



Description

These kits feature all components commonly needed to connect an Environment One Series 2000 grinder pump station to the corporation stop/saddle tap on a sewer main. The kit is designed to be used with SDR 11 HDPE pipe, high density polyethylene pipe (provided by others) and includes compression fittings for fast, easy field installation. The curb stop assembly integrates a robust polypropylene ball valve curb stop and Environment One's field-proven redundant check valve. Curb boxes are supplied in Arch pattern with support plate included.

Thank you for considering E/One's Forced Sewer Main Lateral Kits. As you review the following information, please note that we have included order instructions on the last page of this section for your convenience.

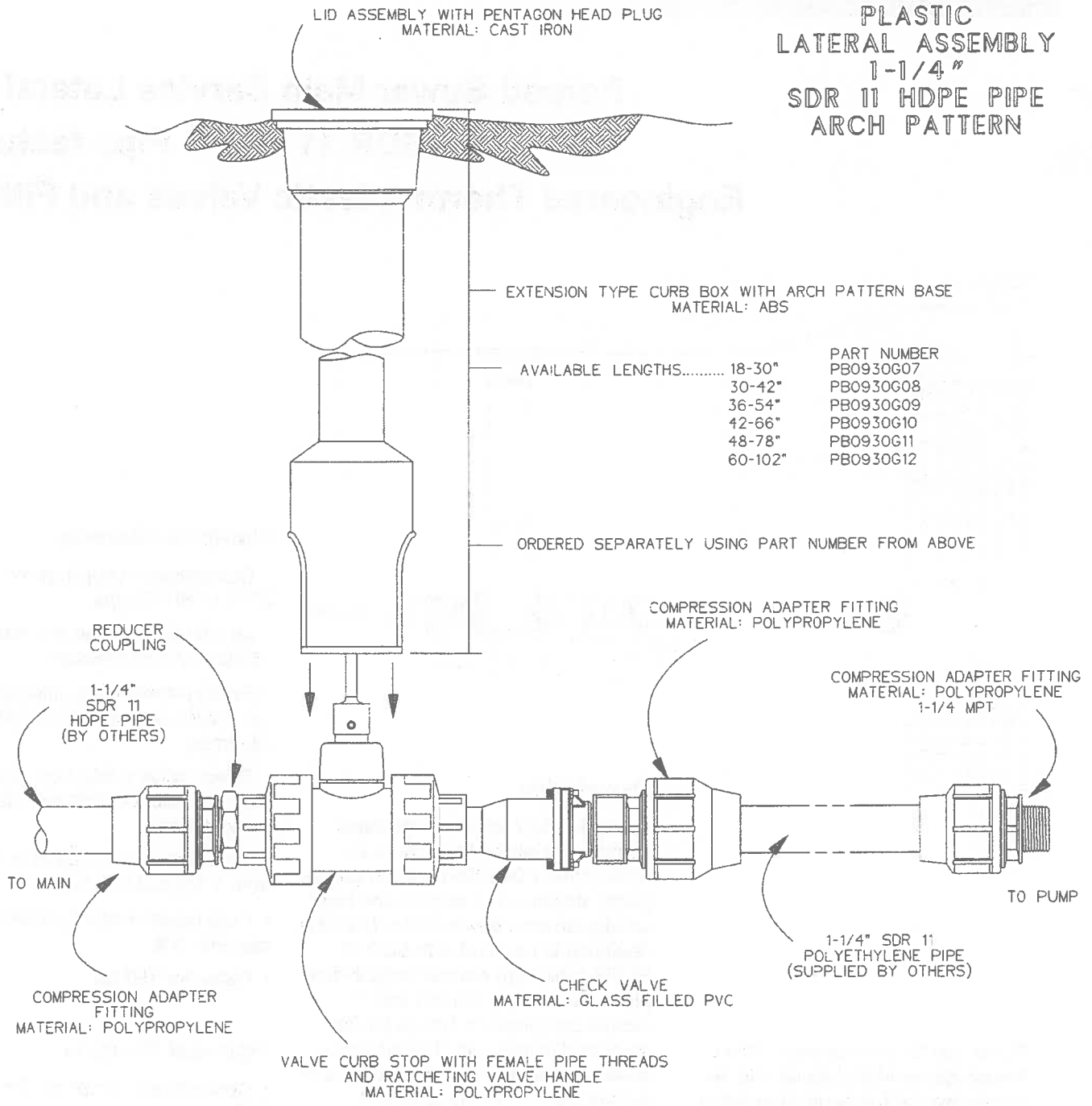
Standard Features

- Compression couplings for 1 1/4" SDR 11 HDPE pipe
- All fittings designed and tested to 150 psi service pressure
- Factory-assembled, integrated ball valve curb stop and check valve assembly
- Check valve made from glass-filled PVC with fabric-reinforced elastomeric flapper
- Arch pattern curb boxes in heights from 1 1/2 feet to 7 feet
- Curb boxes made from ABS with cast iron lids
- Rated for 150 psi

Optional Features


- Compression couplings for 1 1/2" SDR 11 HDPE pipe
- Curb boxes for 1 1/2" SDR 11 HDPE pipe
- Curb boxes available in several sizes

**PLASTIC
LATERAL ASSEMBLY
1-1/4"
SDR 11 HDPE PIPE
ARCH PATTERN**

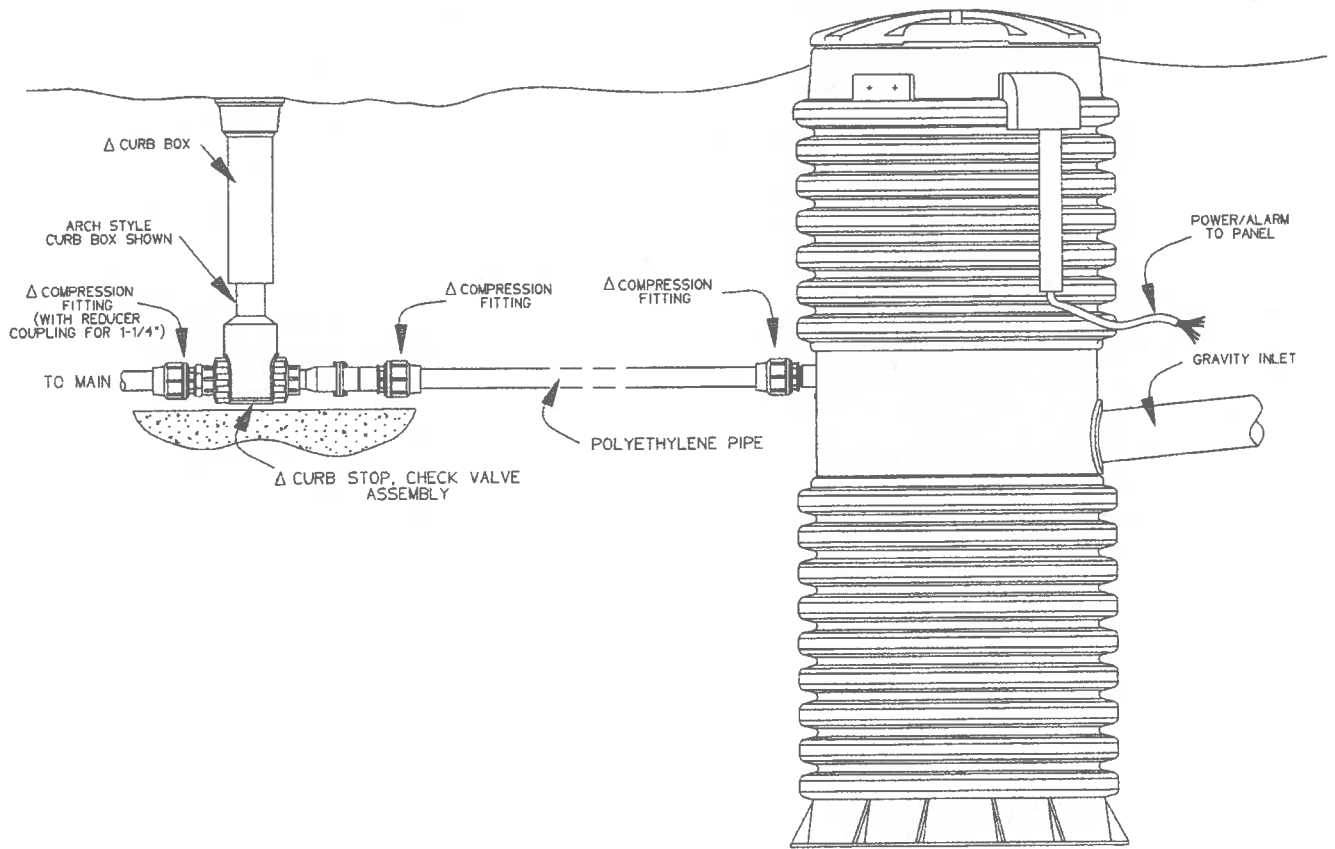


AVAILABLE LENGTHS.....	18-30"	PART NUMBER
	30-42"	PB0930G07
	36-54"	PB0930G08
	42-66"	PB0930G09
	48-78"	PB0930G10
	60-102"	PB0930G11
		PB0930G12

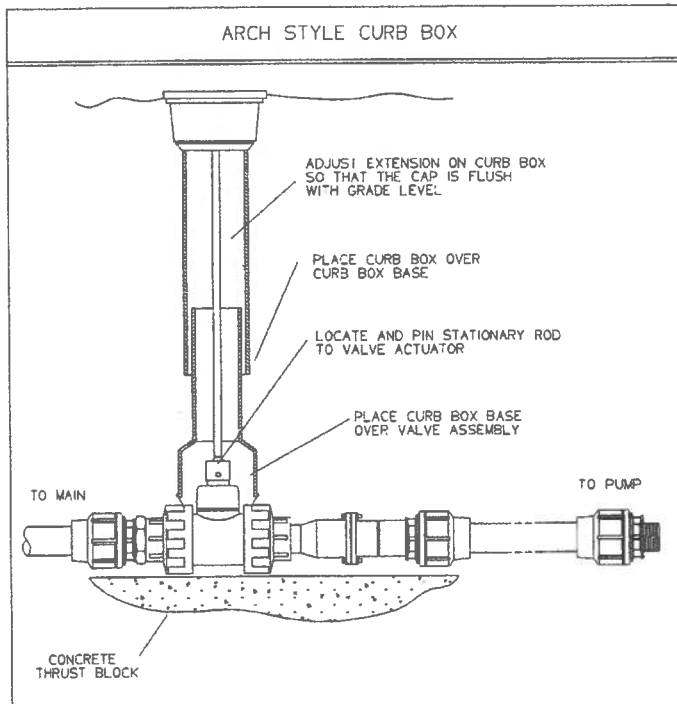
PRESSURE RATING: 150 psi
 ASSEMBLY TO BE USED WITH 1-1/4" SDR 11 PIPE ONLY
 TO ORDER LATERAL ASSEMBLY SHOWN,
 USE PART NUMBER PC0645G21.
 ORDER CURB BOX SEPERATE; SEE ABOVE.

AD	SFG	12/16/04	-	3/16
DR BY	CHK'D	DATE	ISSJE	SCALE
				
PLASTIC LATERAL ASSEMBLY 1-1/4" SDR 11 HDPE PIPE ARCH PATTERN				
PA1997P01				

TYPICAL PLASTIC LATERAL INSTALLATION, SDR 11 HDPE PIPE



MODEL 2010
(NOTE: BALLAST NOT SHOWN)



INSTALL ALL UNDER GROUND PIPING PER
ASTM D 2321-89

INSTALL GRINDER PUMP STATION PER
GRINDER PUMP INSTALLATION INSTRUCTIONS

Δ - INCLUDED IN LATERAL KIT

APS	CH	09/21/01	D	1/16
DR BY	CHK'D	DATE	ISSUE	SCALE



TYPICAL PLASTIC LATERAL INSTALLATION
SDR 11 HDPE PIPE, ARCH STYLE

PA1333P03

